



Dayton &  
Montgomery  
County

## West Central Ohio (WCO) Seasonal Influenza Activity Report MMWR Week 13 3/22/2020 – 3/28/2020

### Weekly Influenza Activity Summary:

**Montgomery County (Week 13):** There were **7 influenza-associated hospitalizations** reported during week 13 (**a 67% decrease**); influenza hospitalizations are below baseline figures. *Fever + ILI and constitutional emergency department (ED) visits decreased from week 12 to week 13; both remained above baseline.* Overall, flu activity is decreasing. Note that ED data after week 9 are likely skewed due to the COVID-19 pandemic.

**West Central Ohio Region (Week 13):** Influenza hospitalizations decreased; there were **15 hospitalizations** during week 13 (**a 63% decrease**). Fifty-five percent (55%) of regional influenza-associated hospitalizations occurred in individuals 5-64 years this flu season. WCO reported **over 12,000 outpatient flu cases** this season. Overall, regional influenza activity is decreasing. Note that outpatient data are incomplete and are likely much higher.

#### Ohio (Week 13): Current Activity Level - Widespread

Increased ILI in at least half of the regions AND recent (within the past 3 weeks) lab confirmed influenza in the state. The Ohio Department of Health (ODH) has reported the following positive results from flu specimens sent to the ODH laboratory (through 3/28/20): (1,033) Total [subtyped] positives; (626) A/pdmH1N1; (17) A/H3N2; (390) Influenza B. ODH reported **10,765 influenza-associated hospitalizations** so far during the 2019-2020 flu season (**228 hospitalizations in week 13, a 58% decrease from last week**). **All flu indicators expect hospitalizations remain above baseline levels.**

**National (Week 13):** Nationally, flu activity is high, but **laboratory-confirmed flu activity decreased; ILI activity is still elevated likely due to COVID-19.** Twenty-five of 54 jurisdictions reported widespread influenza activity (see map). H1N1pdm09 (51.2%), H3N2 (4.1%), Influenza B (43.1%), and not subtyped flu A (1.6%) have accounted for 43,174 positive flu specimens tested by public health laboratories this season. **The CDC estimates 39-55 million illnesses, 400,000-730,000 hospitalizations, 24,000-63,000 total deaths, and confirms 162 pediatric deaths this season.**

For hospitals and other regional healthcare facilities to more accurately monitor influenza in the area, this report will include regional and Montgomery County specific influenza activity. The regional influenza report will include positive influenza cases from healthcare facilities in Auglaize, Butler, Champaign, Clark, Darke, Greene, Miami, Montgomery, Preble, Shelby, and Warren counties (<http://www.gdaha.org/regional-hospital-locator>).

### Confirmed Influenza-associated Hospitalizations

MMWR Week	40-10*	11*	12*	13*	2019-2020 Flu Season Total as of 4/3/20
Week Ending	3/7/20	3/14/20	3/21/20	3/28/20	
Auglaize	27	5	0	0	<b>32</b>
Butler	281	15	8	0	<b>304</b>
Champaign	38	3	0	1	<b>42</b>
Clark	186	10	4	3	<b>203</b>
Darke	34	3	2	0	<b>39</b>
Greene	148	3	1	1	<b>153</b>
Miami	79	6	1	1	<b>87</b>
Montgomery	750	45	21	7	<b>823</b>
Preble	35	1	0	0	<b>36</b>
Shelby	51	1	2	1	<b>55</b>
Warren	146	6	2	1	<b>155</b>
<b>Total</b>	<b>1,775</b>	<b>98</b>	<b>41</b>	<b>15</b>	<b>1,929</b>

\*Numbers may change based on updated ODRS data.

## Weekly Regional Outpatient Influenza Cases

MMWR Week	Week Ending	Influenza A	Influenza B	ILI* Reports (Sentinel Providers)	Weekly Total
40-10	3/7/20	4,920	5,848	768	<b>11,536</b>
11	3/14/20	359	148	37	<b>544</b>
12	3/21/20	132	63	22	<b>217</b>
13	3/28/20	27	2	3	<b>32</b>
<b>Season Total**</b>	NA	<b>5,438</b>	<b>6,061</b>	<b>830</b>	<b>12,329</b>

\*Influenza-like Illness (ILI)

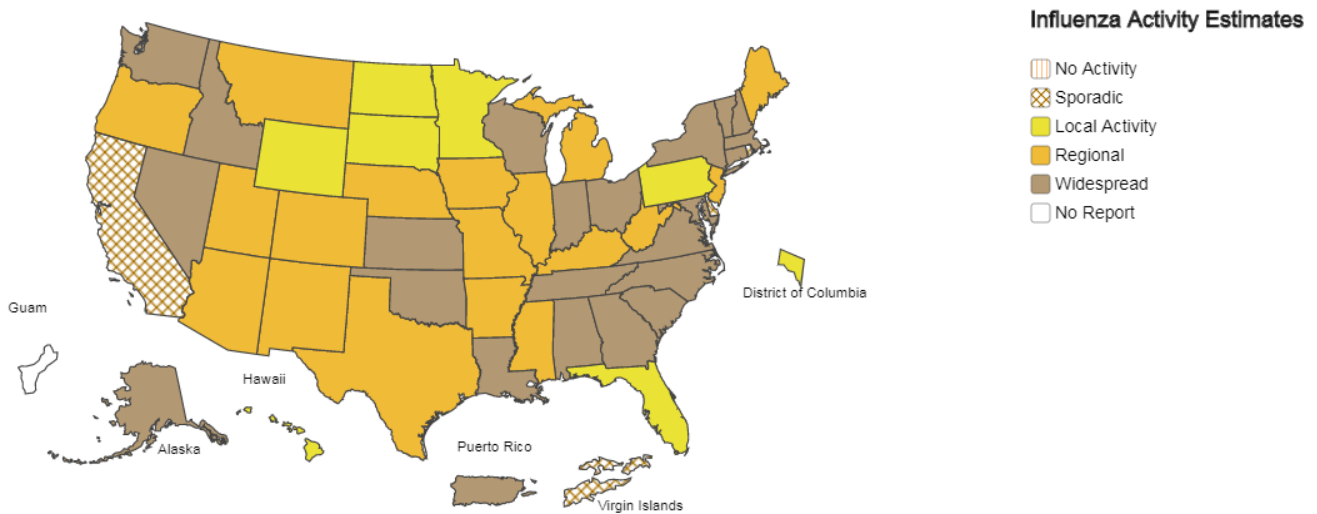
\*\*Note. Data are incomplete. Several hospitals have not submitted outpatient data for multiple weeks – true case counts are likely higher.



### A Weekly Influenza Surveillance Report Prepared by the Influenza Division

Weekly Influenza Activity Estimates Reported by State and Territorial Epidemiologists\*

Week Ending Mar 28, 2020 - Week 13



\*This map indicates geographic spread and does not measure the severity of influenza activity.

National Influenza Activity Summary <http://www.cdc.gov/flu/weekly/fluactivitysurv.htm>

### Additional Surveillance Data & Flu Facts

Flu Facts <http://www.flu.gov/>





Ohio Department of Health Seasonal Influenza Activity Summary <https://odh.ohio.gov/wps/portal/gov/odh/know-our-programs/seasonal-influenza/ohio-flu-activity/>

Montgomery County Seasonal Influenza Activity Summary <http://www.phdmc.org/report/montgomery-county-flu-activity-level>



## Montgomery County Seasonal Influenza Activity Report MMWR Week 13 3/22/2020 – 3/28/2020

### Montgomery County Weekly Surveillance Data

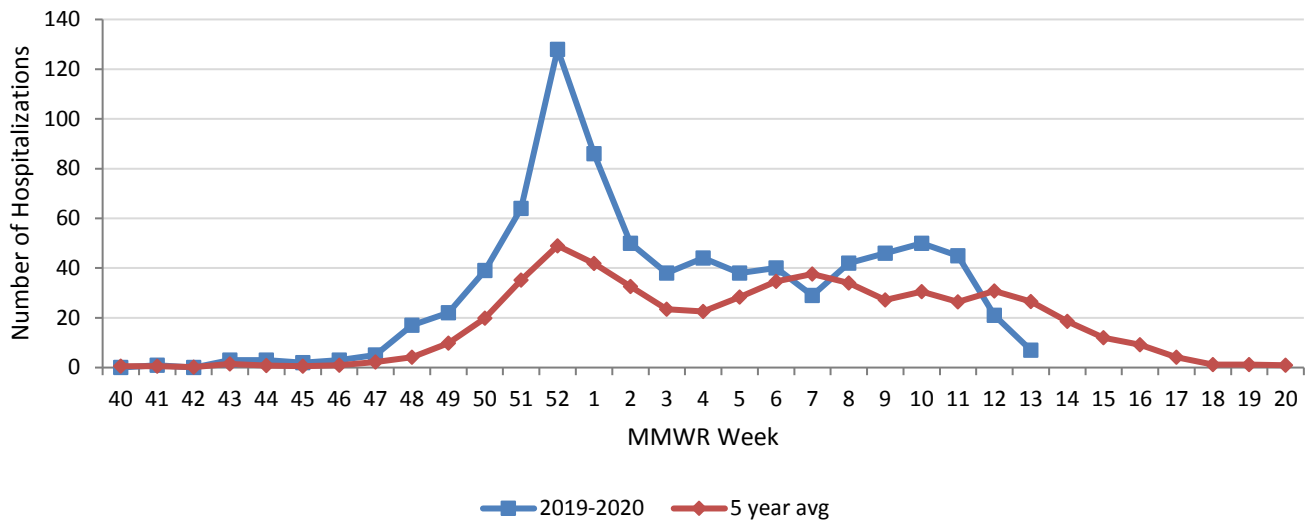
Surveillance Data	Current Week	% Change	Trend
Influenza Hospitalizations	7	-66.7%	
% Constitutional ED visits	11.2%**	-22.8%**	
% Fever & ILI ED visits	3.7%**	-27.5%**	
Thermometer sales	246**	-28.1%**	

\*Percent changes based on small numbers may give misleading information about flu activity.

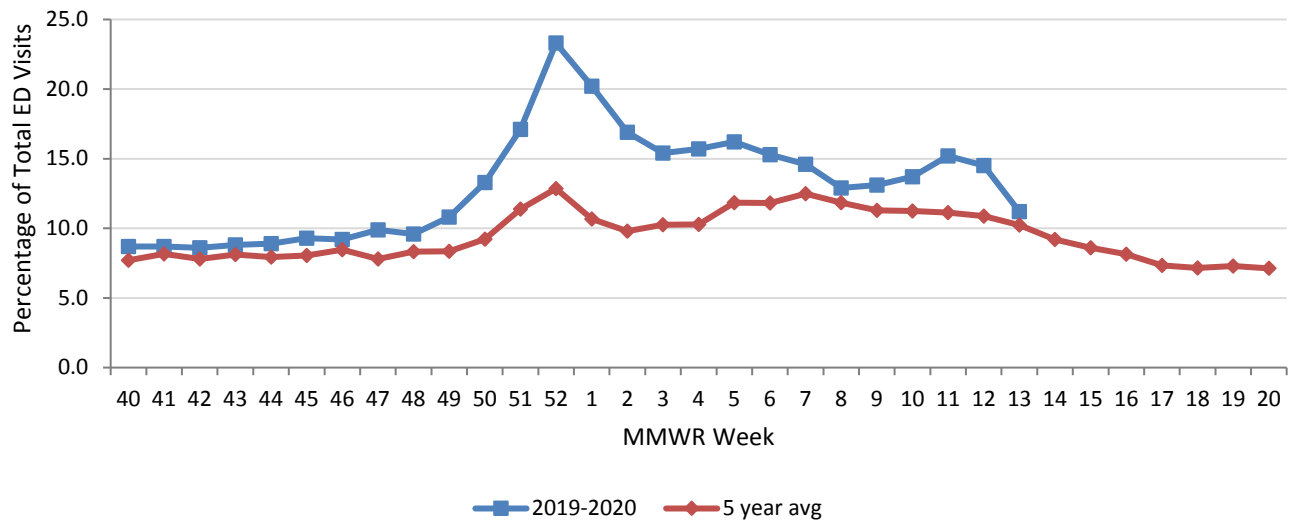
Dash (-) indicates no change

\*\*Note. These values are likely skewed due to the COVID-19 pandemic.

### Montgomery County Confirmed Influenza-associated Hospitalizations by MMWR Week with 5-Year Baseline Average; 2019-2020

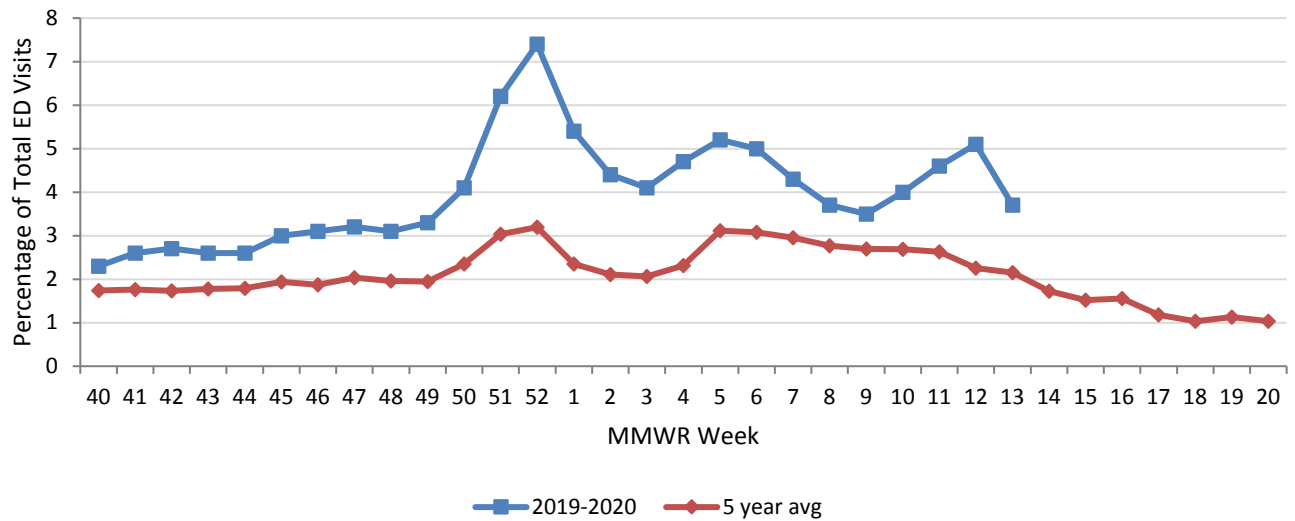


### Montgomery County Constitutional ED Visits by MMWR Week with 5-Year Baseline Average; 2019-2020



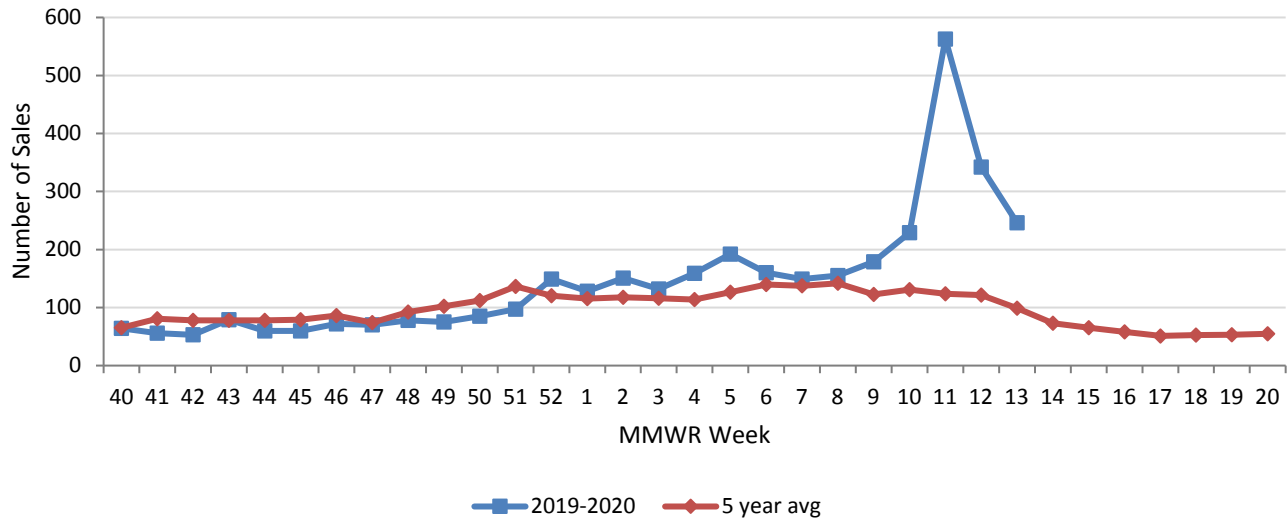
\*\*Note. Values after week 9 are likely skewed due to the COVID-19 pandemic.

### Montgomery County Fever & ILI Specified ED Visits by MMWR Week with 5-Year Baseline Average; 2019-2020



\*\*Note. Values after week 9 are likely skewed due to the COVID-19 pandemic.

## Montgomery County Thermometer Sales by MMWR Week with 5-Year Baseline Average; 2019-2020



\*\*Note. Values after week 9 are likely skewed due to the COVID-19 pandemic.

---

### Sources of Influenza Surveillance Data

Six types of data sources are examined on a weekly basis to help determine the influenza activity level for Montgomery County:

**National Retail Data Monitor (NRDM)-OTC Drug Purchases:** The NRDM collects over-the-counter (OTC) drug sales information from approximately 80 Montgomery County chain drug stores and grocery stores. For influenza surveillance, thermometer sales are monitored on a weekly basis.

**Emergency Department Visits (EpiCenter):** EpiCenter collects emergency department chief complaint data from hospitals and urgent care facilities across Ohio counties in real time and classifies them into symptom and syndrome categories. Chief complaints from the constitutional syndrome category and the ILI + Fever symptoms classifier are analyzed for influenza surveillance.

**Sentinel Providers (ILINet):** Sentinel providers, through the US Influenza-like Illness Surveillance Network (ILINet), collect outpatient ILI data. ILI is defined as a fever (> 100 °F), **and** cough and/or sore throat without another known cause. Providers report the total number of patients seen and the number of patients with ILI by age group on a weekly basis. Sentinel providers also submit specimens for influenza testing to the ODH laboratory throughout the influenza season.

**Laboratory Surveillance:** Positive laboratory reports are forwarded to local health departments. Generally, specimens are submitted by health care providers or hospitals.

**Influenza-associated Hospitalizations (ODRS):** Influenza-associated hospitalizations are reported to local health departments for entry into the Ohio Disease Reporting System (ODRS). Hospitalizations can be used as an indicator of the severity of illness during a particular influenza season. This condition became reportable in 2009.

**Influenza-associated Pediatric Mortality (ODRS):** Influenza-associated pediatric mortalities are reported to local health departments for entry into ODRS. Pediatric deaths can be an indicator of the severity of illness during the influenza season. This condition became reportable in 2005.

---

For further information or questions, please contact Public Health – Dayton & Montgomery County, Epidemiology Department at [epi@phdmc.org](mailto:epi@phdmc.org) or 937-224-3691.

Completed by PHDMC Epidemiology Section, on April 3, 2020