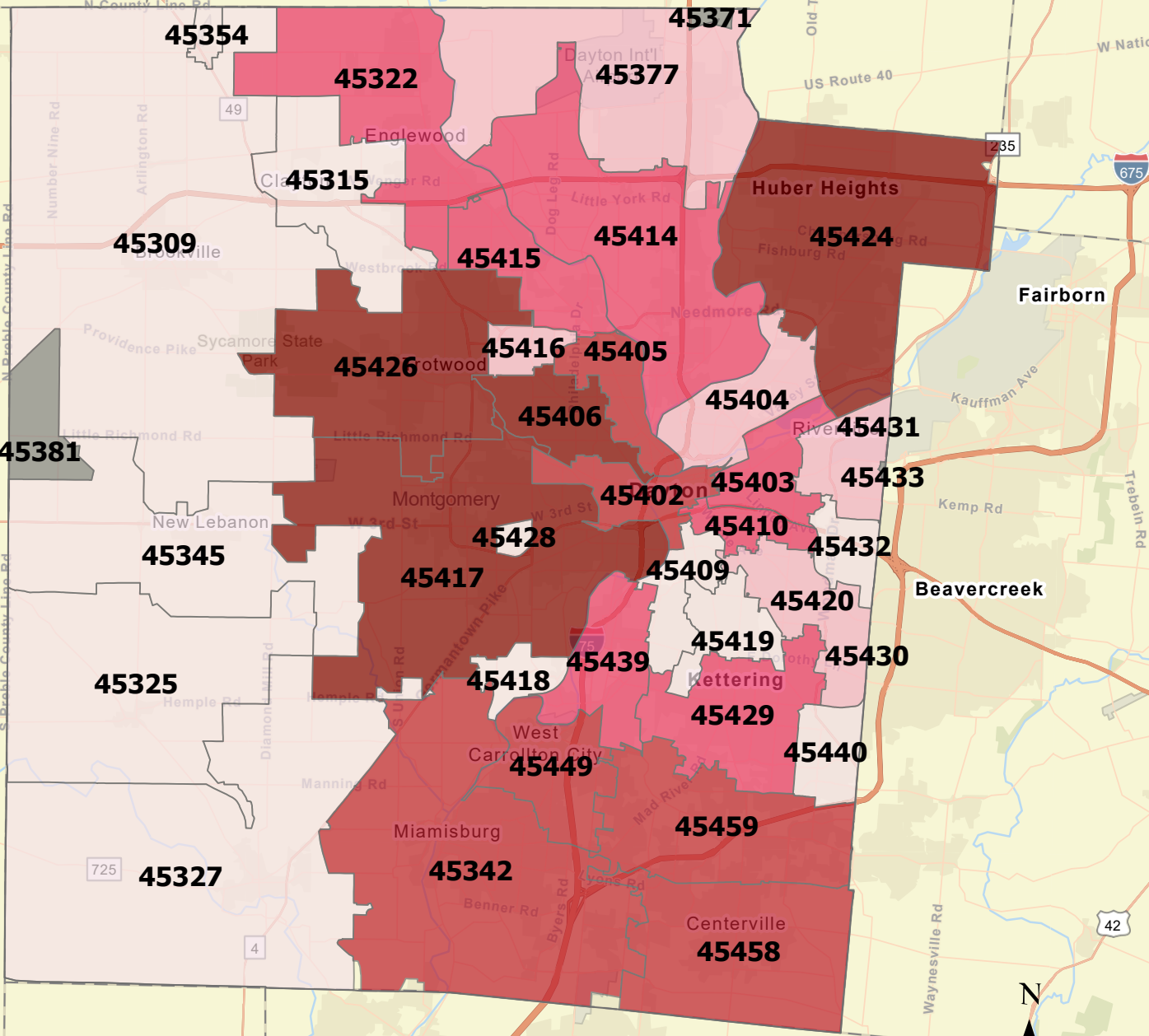
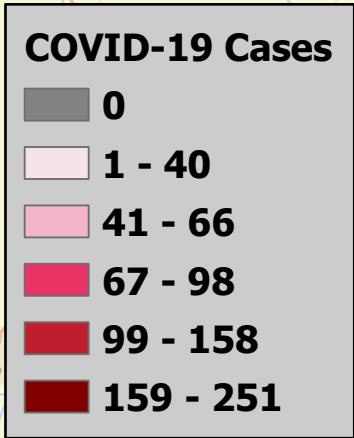


Montgomery County COVID-19 Cases by Zip Code As of 7/16/20

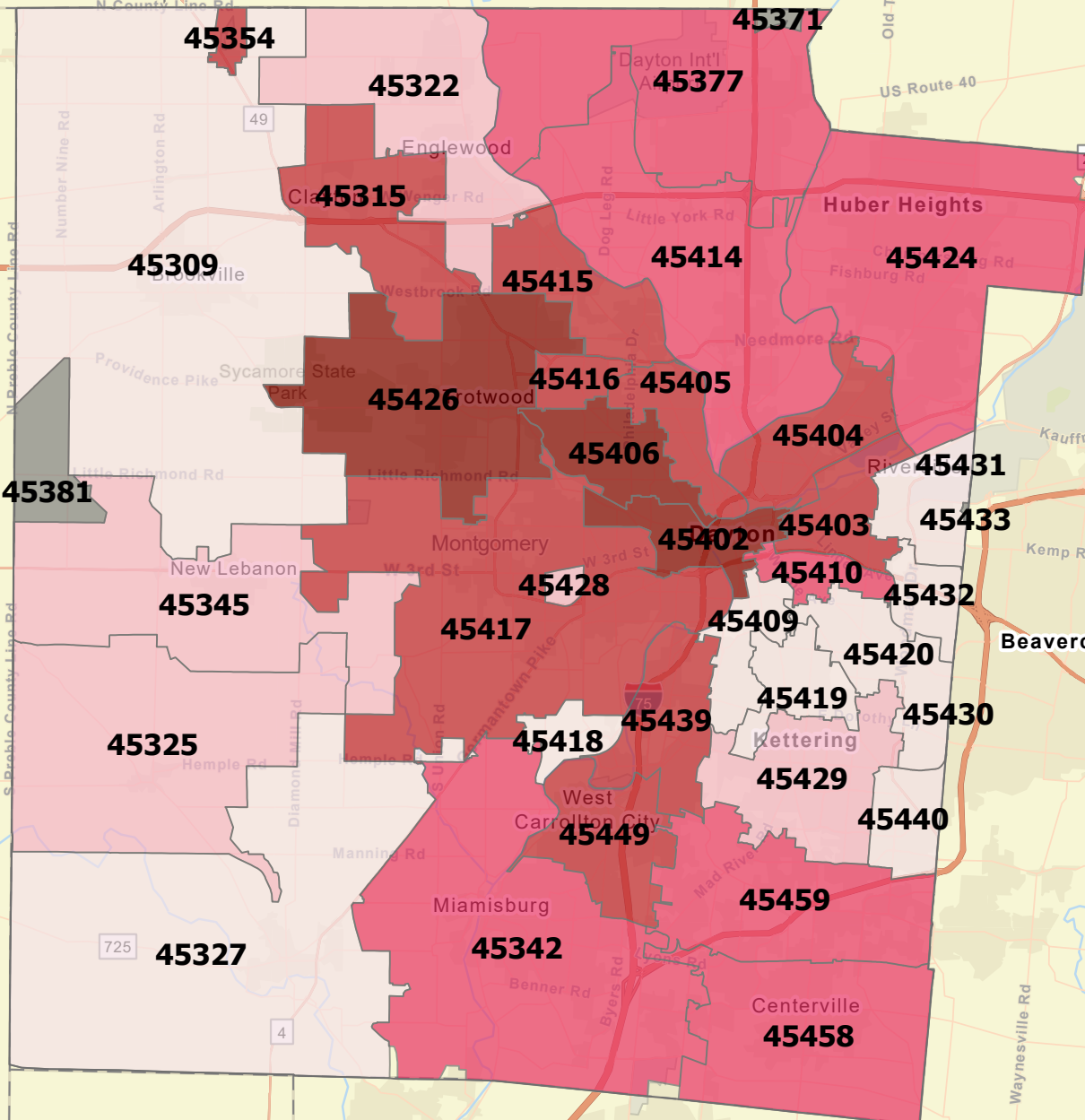
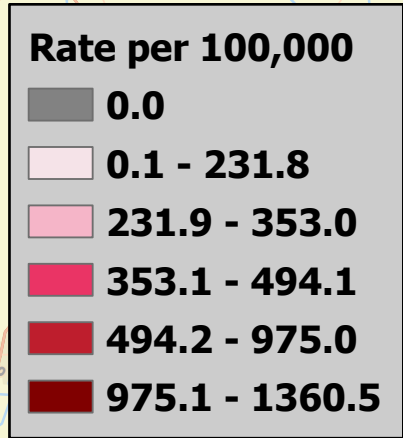


Map updated by PHDMC Epidemiology 7/16/20
 Source: State of Ohio COVID-19 Dashboard, ODH

Sources: Esri, HERE, Garmin, FAO, NOAA, USGS, © OpenStreetMap contributors, and the GIS User Community



Rate (per 100,000) of Montgomery County COVID-19 Cases by Zip Code As of 7/16/20



Map updated by PHDMC Epidemiology 7/16/20
 Source: State of Ohio COVID-19 Dashboard, ODH

Sources: Esri, HERE, Garmin, FAO, NOAA, USGS, © OpenStreetMap contributors, and the GIS User Community

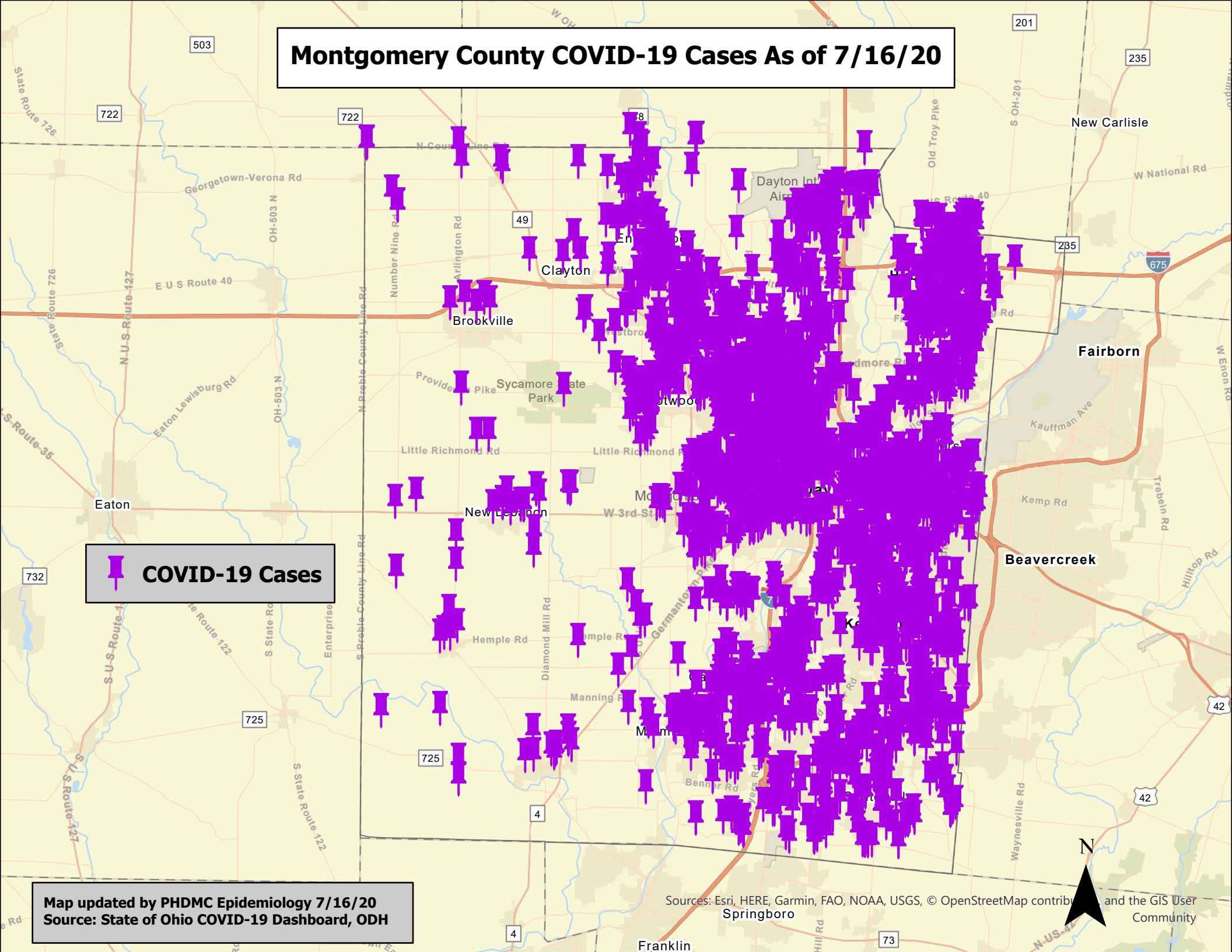


Montgomery County COVID-19 Cases As of 7/16/20

 **COVID-19 Cases**

Map updated by PHDMC Epidemiology 7/16/20
Source: State of Ohio COVID-19 Dashboard, ODH

Sources: Esri, HERE, Garmin, FAO, NOAA, USGS, © OpenStreetMap contributors, and the GIS User Community



Density of Montgomery County COVID-19 Cases As of 7/16/20



Map updated by PHDMC Epidemiology 7/16/20
Source: State of Ohio COVID-19 Dashboard, ODH

Sources: Esri, HERE, Garmin, FAO, NOAA, USGS, © OpenStreetMap contributors, and the GIS User Community

