



Dayton &  
Montgomery  
County

## West Central Ohio (WCO) Seasonal Influenza Activity Report MMWR Week 19 5/3/2020 – 5/9/2020

### Weekly Influenza Activity Summary:

**Montgomery County (Week 19):** There were **0 influenza-associated hospitalizations** reported during week 19; influenza hospitalizations are below baseline figures. **Fever + ILI and constitutional emergency department (ED) visits are low; Fever + ILI is slightly above baseline.** Overall, flu activity is low. Note that ED data after week 9 are likely skewed due to the COVID-19 pandemic.

**West Central Ohio Region (Week 19):** There were **0 hospitalizations** for the second consecutive week. Fifty-five percent (55%) of regional influenza-associated hospitalizations occurred in individuals 5-64 years this flu season. WCO reported **12,353 outpatient flu cases and 1,943 hospitalizations** this season. Overall, regional influenza activity is low. Note that outpatient data are incomplete and are likely much higher.

**Ohio (Week 19):** Current Activity Level - Sporadic

Ohio flu activity has been downgraded to sporadic. The Ohio Department of Health (ODH) has reported the following positive results from flu specimens sent to the ODH laboratory (through 5/9/20): (1,034) Total [subtyped] positives; (627) A/pdmH1N1; (17) A/H3N2; (390) Influenza B. ODH reported **11,001 influenza-associated hospitalizations** so far during the 2019-2020 flu season (**10 hospitalizations in week 19, a 67% increase from last week**). **All flu indicators expect hospitalizations and thermometer sales, remain slightly above baseline levels.**

**National (Week 19):** Nationally, flu activity is decreasing, and **laboratory-confirmed flu activity remains low; ILI activity continues to decrease and is now below baseline.** No jurisdictions are reporting widespread influenza activity (see map). **The CDC estimates 39-56 million illnesses, 410,000-740,000 hospitalizations, 24,000-62,000 total deaths, and confirms 174 pediatric deaths.**

For hospitals and other regional healthcare facilities to more accurately monitor influenza in the area, this report will include regional and Montgomery County specific influenza activity. The regional influenza report will include positive influenza cases from healthcare facilities in Auglaize, Butler, Champaign, Clark, Darke, Greene, Miami, Montgomery, Preble, Shelby, and Warren counties (<http://www.gdaha.org/regional-hospital-locator>).

**Confirmed Influenza-associated Hospitalizations**

MMWR Week	40-16*	17*	18*	19*	2019-2020 Flu Season Total as of 5/15/20
Week Ending	4/18/20	4/25/20	5/2/20	5/9/20	
Auglaize	32	0	0	0	<b>32</b>
Butler	307	0	0	0	<b>307</b>
Champaign	42	0	0	0	<b>42</b>
Clark	203	0	0	0	<b>203</b>
Darke	39	0	0	0	<b>39</b>
Greene	155	0	0	0	<b>155</b>
Miami	88	0	0	0	<b>88</b>
Montgomery	827	1	0	0	<b>828</b>
Preble	36	0	0	0	<b>36</b>
Shelby	56	0	0	0	<b>56</b>
Warren	157	0	0	0	<b>157</b>
<b>Total</b>	<b>1,942</b>	<b>1</b>	<b>0</b>	<b>0</b>	<b>1,943</b>

\*Numbers may change based on updated ODRS data.

## Weekly Regional Outpatient Influenza Cases

MMWR Week	Week Ending	Influenza A	Influenza B	ILI* Reports (Sentinel Providers)	Weekly Total
40-16	4/18/20	5,451	6,066	836	<b>12,353</b>
17	4/25/20	0	0	0	<b>0</b>
18	5/2/20	0	0	0	<b>0</b>
19	5/9/20	0	0	0	<b>0</b>
<b>Season Total**</b>	NA	<b>5,451</b>	<b>6,066</b>	<b>836</b>	<b>12,353</b>

\*Influenza-like Illness (ILI)

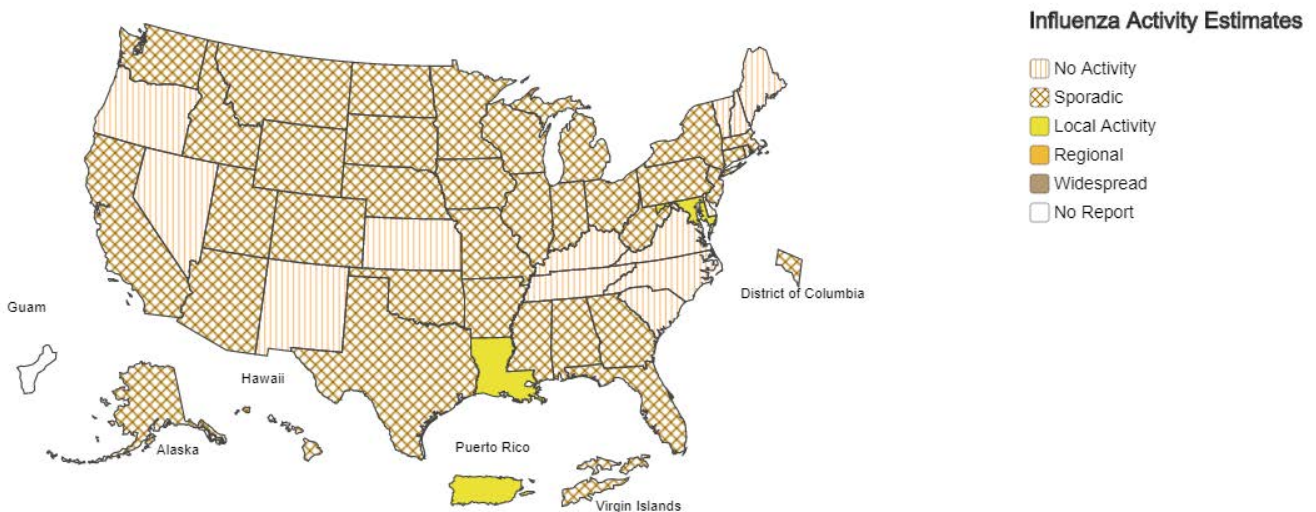
\*\*Note. Data are incomplete. Several hospitals have not submitted outpatient data for multiple weeks – true case counts are likely higher.



### A Weekly Influenza Surveillance Report Prepared by the Influenza Division

Weekly Influenza Activity Estimates Reported by State and Territorial Epidemiologists\*

Week Ending May 09, 2020 - Week 19



\*This map indicates geographic spread and does not measure the severity of influenza activity.

National Influenza Activity Summary <http://www.cdc.gov/flu/weekly/fluactivitysurv.htm>

### Additional Surveillance Data & Flu Facts

Flu Facts <http://www.flu.gov/>

Ohio Department of Health Seasonal Influenza Activity Summary <https://odh.ohio.gov/wps/portal/gov/odh/know-our-programs/seasonal-influenza/ohio-flu-activity/>

Montgomery County Seasonal Influenza Activity Summary <http://www.phdmc.org/report/montgomery-county-flu-activity-level>







**Dayton &  
Montgomery  
County**

## Montgomery County

**Seasonal Influenza Activity Report**  
**MMWR Week 19**  
**5/3/2020 – 5/9/2020**

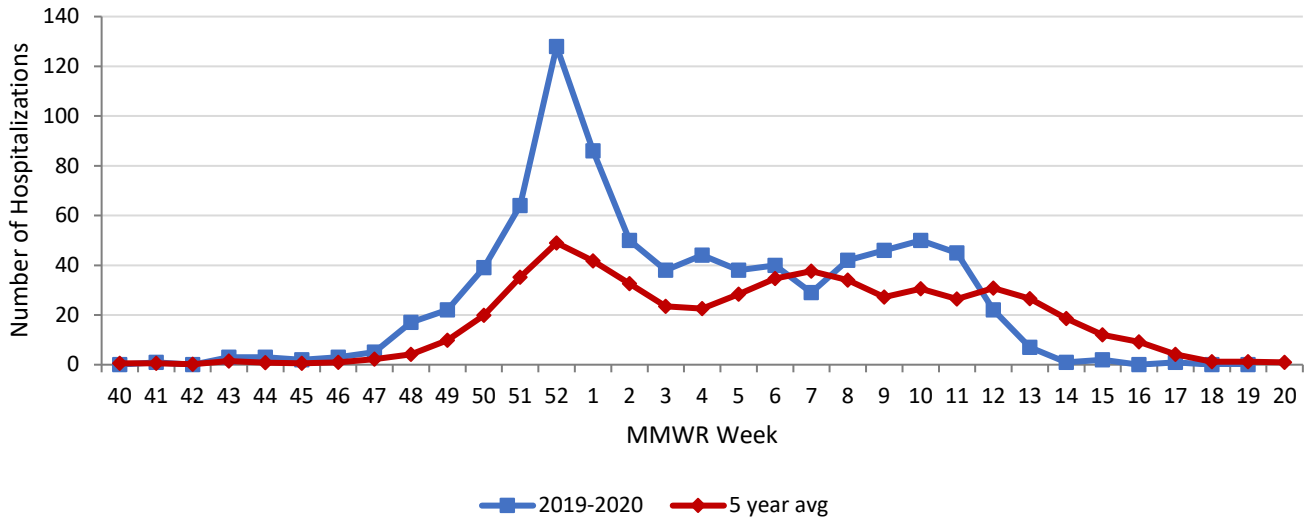
**Montgomery County Weekly Surveillance Data**

Surveillance Data	Current Week	% Change	Trend
Influenza Hospitalizations	0	-	
% Constitutional ED visits	7.2%**	-	
% Fever & ILI ED visits	1.2%**	-25.0%**	
Thermometer sales	45**	95%**	

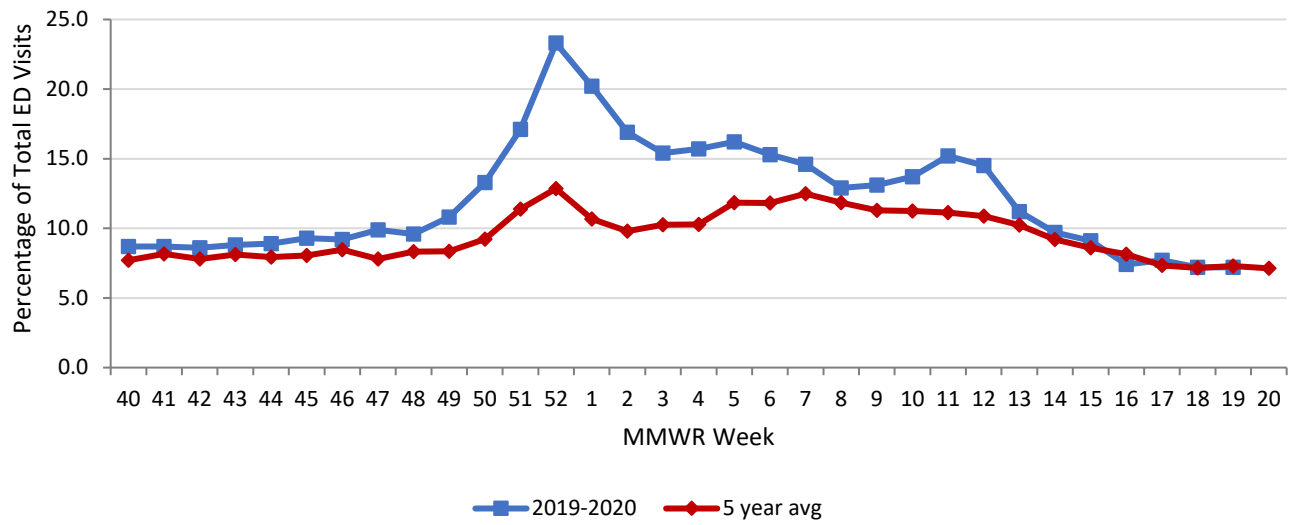
Dash (-) indicates no change

\*\*Note. These values are likely skewed due to the COVID-19 pandemic.

**Montgomery County Confirmed Influenza-associated Hospitalizations  
by MMWR Week with 5-Year Baseline Average; 2019-2020**

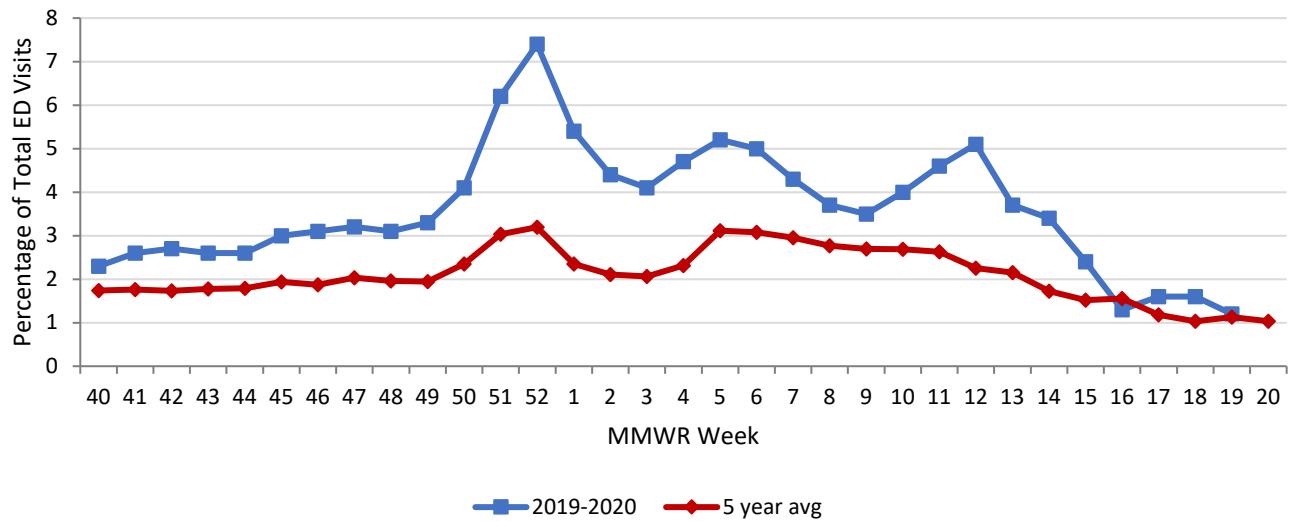


### Montgomery County Constitutional ED Visits by MMWR Week with 5-Year Baseline Average; 2019-2020



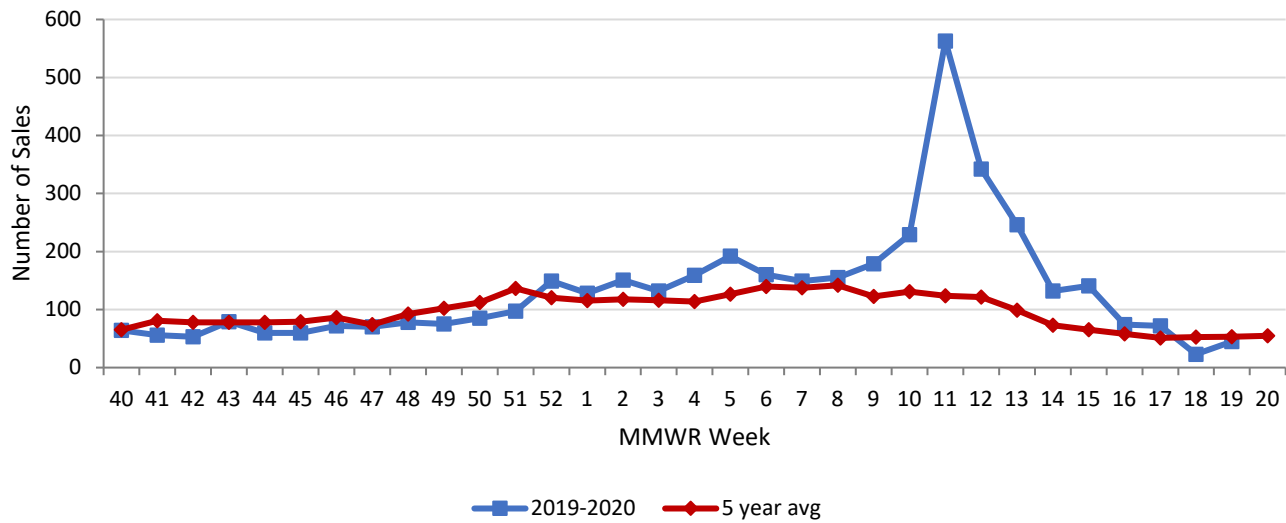
\*\*Note. Values after week 9 are likely skewed due to the COVID-19 pandemic.

### Montgomery County Fever & ILI Specified ED Visits by MMWR Week with 5-Year Baseline Average; 2019-2020



\*\*Note. Values after week 9 are likely skewed due to the COVID-19 pandemic.

## Montgomery County Thermometer Sales by MMWR Week with 5-Year Baseline Average; 2019-2020



\*\*Note. Values after week 9 are likely skewed due to the COVID-19 pandemic.

### Sources of Influenza Surveillance Data

Six types of data sources are examined on a weekly basis to help determine the influenza activity level for Montgomery County:

**National Retail Data Monitor (NRDM)-OTC Drug Purchases:** The NRDM collects over-the-counter (OTC) drug sales information from approximately 80 Montgomery County chain drug stores and grocery stores. For influenza surveillance, thermometer sales are monitored on a weekly basis.

**Emergency Department Visits (EpiCenter):** EpiCenter collects emergency department chief complaint data from hospitals and urgent care facilities across Ohio counties in real time and classifies them into symptom and syndrome categories. Chief complaints from the constitutional syndrome category and the ILI + Fever symptoms classifier are analyzed for influenza surveillance.

**Sentinel Providers (ILINet):** Sentinel providers, through the US Influenza-like Illness Surveillance Network (ILINet), collect outpatient ILI data. ILI is defined as a fever (> 100 °F), and cough and/or sore throat without another known cause. Providers report the total number of patients seen and the number of patients with ILI by age group on a weekly basis. Sentinel providers also submit specimens for influenza testing to the ODH laboratory throughout the influenza season.

**Laboratory Surveillance:** Positive laboratory reports are forwarded to local health departments. Generally, specimens are submitted by health care providers or hospitals.

**Influenza-associated Hospitalizations (ODRS):** Influenza-associated hospitalizations are reported to local health departments for entry into the Ohio Disease Reporting System (ODRS). Hospitalizations can be used as an indicator of the severity of illness during a particular influenza season. This condition became reportable in 2009.

**Influenza-associated Pediatric Mortality (ODRS):** Influenza-associated pediatric mortalities are reported to local health departments for entry into ODRS. Pediatric deaths can be an indicator of the severity of illness during the influenza season. This condition became reportable in 2005.

For further information or questions, please contact Public Health – Dayton & Montgomery County, Epidemiology Department at [epi@phdmc.org](mailto:epi@phdmc.org) or 937-224-3691.

Completed by PHDMC Epidemiology Section, on May 15, 2020