



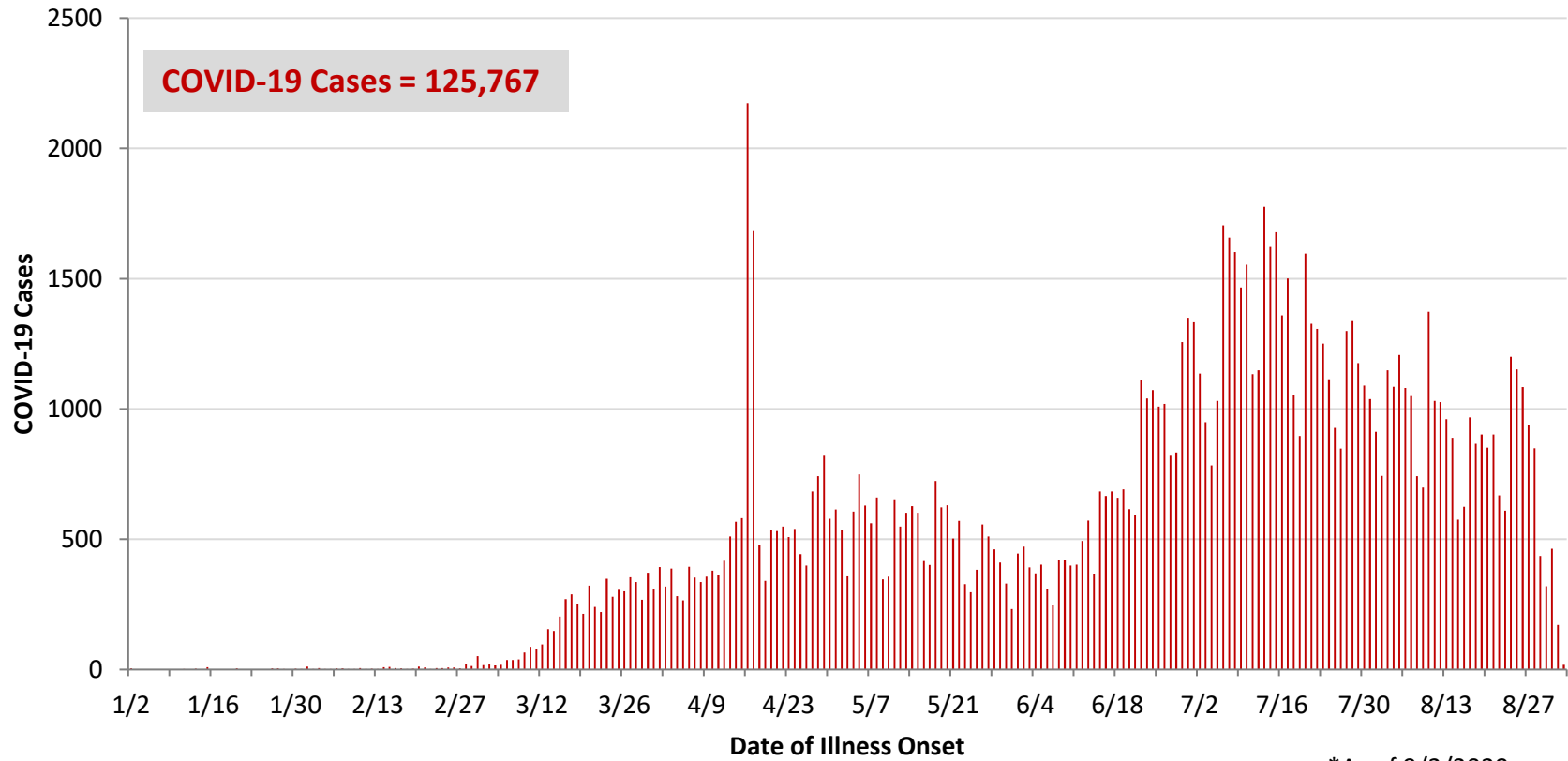
**Ohio, West Central Ohio (WCO), and Montgomery County COVID-19 Cases  
As of 9/2/20**

**Source:** The State of Ohio COVID-19 Dashboard, Ohio Department of Health

**Ohio:**

| <b>Preliminary COVID-19 Cases<br/>Ohio, As of 9/2/2020</b> |                |                    |
|--|----------------|--------------------|
| <b>Sex</b>   | <b># Cases</b> | <b>% Cases</b>     |
| Female   | 65,385         | 52%                |
| Male   | 59,378         | 47%                |
| Unknown  | 1,004          | 1%                 |
| <b>Total</b>   | <b>125,767</b> | <b>100%</b>        |
| <b>Age Group</b>   |                |                    |
| <b>Age Group</b>   | <b># Cases</b> | <b>% Cases</b>     |
| 0-19   | 13,106         | 10%                |
| 20-29  | 26,114         | 21%                |
| 30-39  | 19,934         | 16%                |
| 40-49  | 17,769         | 14%                |
| 50-59  | 18,241         | 15%                |
| 60-69  | 13,722         | 11%                |
| 70-79  | 8,654          | 7%                 |
| 80+  | 8,126          | 6%                 |
| Unknown  | 101            | 0%                 |
| <b>Total</b>   | <b>125,767</b> | <b>100%</b>        |
| <b>Hospitalized</b>  |                |                    |
| Hospitalized   | 13,574         | 10.8%              |
| <b>Deaths</b>  |                |                    |
| Deaths   | 4,176          | 3.3%               |
| <b>Age Group</b>   |                |                    |
| <b>Age Group</b>   | <b>Deaths</b>  | <b>% of Deaths</b> |
| 0-19   | 2              | 0%                 |
| 20-29  | 14             | 0%                 |
| 30-39  | 31             | 1%                 |
| 40-49  | 70             | 2%                 |
| 50-59  | 251            | 6%                 |
| 60-69  | 591            | 14%                |
| 70-79  | 1,037          | 25%                |
| 80+  | 2,180          | 52%                |
| <b>Total</b>   | <b>4,176</b>   | <b>100%</b>        |

**PRELIMINARY COVID-19 Cases by Date of Illness Onset  
Ohio, 1/2/20 - 9/2/20\***

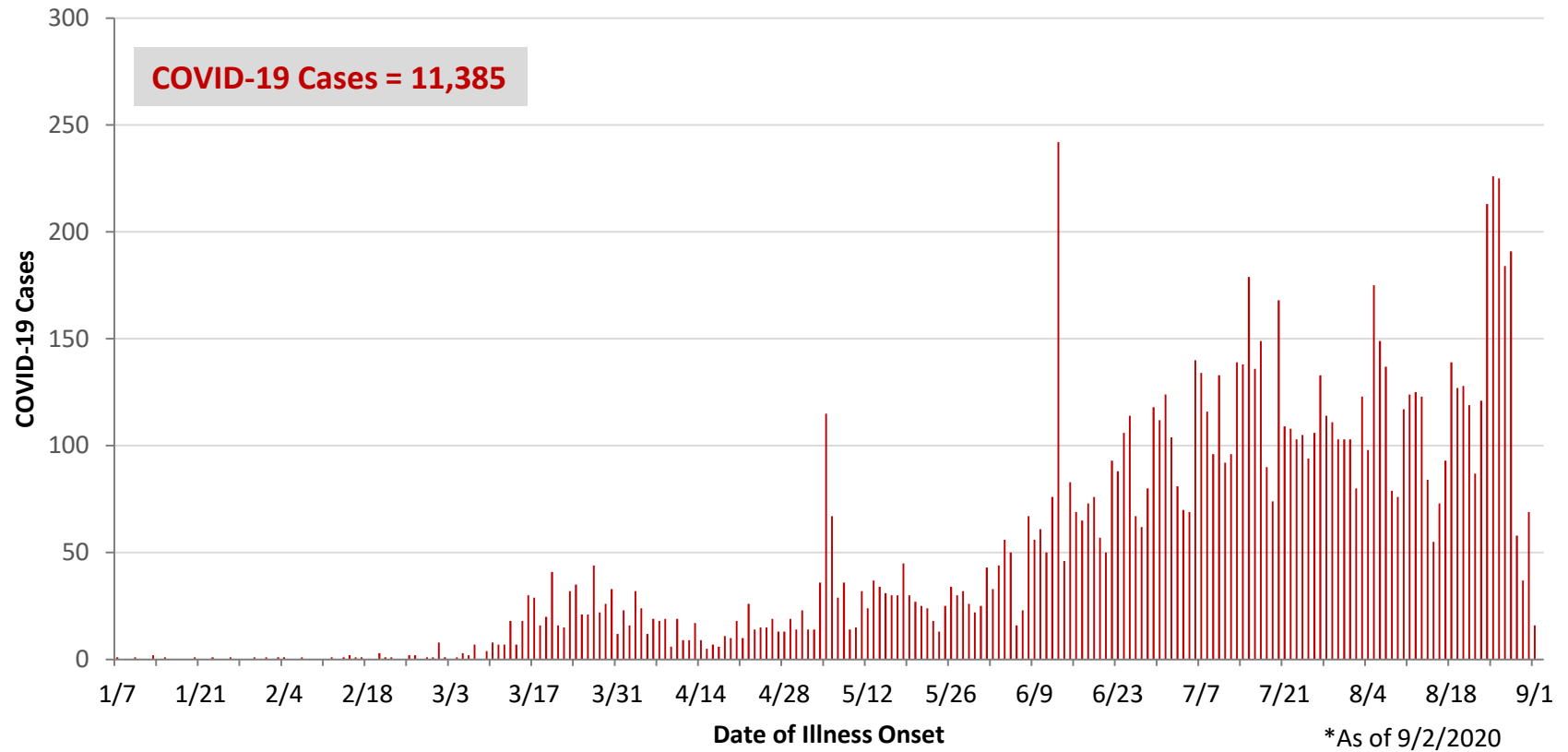


\*As of 9/2/2020

WCO:

| Preliminary COVID-19 Cases<br>West Central Ohio, As of 9/2/2020 |               |             |
|---|---------------|-------------|
| County  | # Cases       | % Cases     |
| Champaign   | 250           | 2%          |
| Clark   | 1,449         | 13%         |
| Darke   | 633           | 6%          |
| Greene  | 1,020         | 9%          |
| Miami   | 1,088         | 10%         |
| Montgomery  | 6,210         | 55%         |
| Preble  | 359           | 3%          |
| Shelby  | 376           | 3%          |
| <b>Total</b>  | <b>11,385</b> | <b>100%</b> |
| Sex   |               |             |
| Sex   | # Cases       | % Cases     |
| Female  | 6,248         | 55%         |
| Male  | 4,961         | 44%         |
| Unknown   | 176           | 2%          |
| <b>Total</b>  | <b>11,385</b> | <b>100%</b> |
| Age Group   |               |             |
| Age Group   | # Cases       | % Cases     |
| 0-19  | 1,450         | 13%         |
| 20-29   | 2,478         | 22%         |
| 30-39   | 1,631         | 14%         |
| 40-49   | 1,452         | 13%         |
| 50-59   | 1,569         | 14%         |
| 60-69   | 1,227         | 11%         |
| 70-79   | 854           | 8%          |
| 80+   | 724           | 6%          |
| <b>Total</b>  | <b>11,385</b> | <b>100%</b> |
| Hospitalized  | 1,253         | 11.0%       |
| Deaths  | 271           | 2.4%        |
| Age Group   |               |             |
| Age Group   | Deaths        | % of Deaths |
| 0-19  | 1             | 0%          |
| 20-29   | 3             | 1%          |
| 30-39   | 4             | 1%          |
| 40-49   | 5             | 2%          |
| 50-59   | 16            | 6%          |
| 60-69   | 41            | 15%         |
| 70-79   | 60            | 22%         |
| 80+   | 141           | 52%         |
| <b>Total</b>  | <b>271</b>    | <b>100%</b> |

**PRELIMINARY COVID-19 Cases by Date of Illness Onset  
West Central Ohio, 1/7/20 - 9/2/20\***



**Montgomery County:**

| <b>Preliminary COVID-19 Cases<br/>Montgomery County, As of 9/2/2020</b> |                |                    |
|---|----------------|--------------------|
| <b>Sex</b>  | <b># Cases</b> | <b>% Cases</b>     |
| Female  | 3,473          | 56%                |
| Male  | 2,675          | 43%                |
| Unknown   | 62             | 1%                 |
| <b>Total</b>  | <b>6,210</b>   | <b>100%</b>        |
| <b>Age Group</b>  |                |                    |
| <b>Age Group</b>  | <b># Cases</b> | <b>% Cases</b>     |
| 0-19  | 954            | 15%                |
| 20-29   | 1,500          | 24%                |
| 30-39   | 868            | 14%                |
| 40-49   | 779            | 13%                |
| 50-59   | 794            | 13%                |
| 60-69   | 623            | 10%                |
| 70-79   | 398            | 6%                 |
| 80+   | 293            | 5%                 |
| Unknown   | 1              | 0%                 |
| <b>Total</b>  | <b>6,210</b>   | <b>100%</b>        |
| <b>Hospitalized</b>   |                |                    |
| Hospitalized  | 749            | 12.1%              |
| <b>Deaths</b>   |                |                    |
| Deaths  | 133            | 2.1%               |
| <b>Age Group</b>  |                |                    |
| <b>Age Group</b>  | <b>Deaths</b>  | <b>% of Deaths</b> |
| 0-19  | 1              | 1%                 |
| 20-29   | 3              | 2%                 |
| 30-39   | 3              | 2%                 |
| 40-49   | 5              | 4%                 |
| 50-59   | 10             | 8%                 |
| 60-69   | 24             | 18%                |
| 70-79   | 32             | 24%                |
| 80+   | 55             | 41%                |
| <b>Total</b>  | <b>133</b>     | <b>100%</b>        |

| <b>Age Group</b> | <b>Hospitalizations</b> | <b>% of Age Group Cases</b> |
|------------------|-------------------------|-----------------------------|
| 0-19             | 28                      | 2.9%                        |
| 20-29            | 39                      | 2.6%                        |
| 30-39            | 65                      | 7.5%                        |
| 40-49            | 80                      | 10.3%                       |
| 50-59            | 139                     | 17.5%                       |
| 60-69            | 164                     | 26.3%                       |
| 70-79            | 140                     | 35.2%                       |
| 80+              | 94                      | 32.1%                       |
| <b>Total</b>     | <b>749</b>              | <b>12.1%</b>                |

Source: Ohio Disease Reporting System, ODH

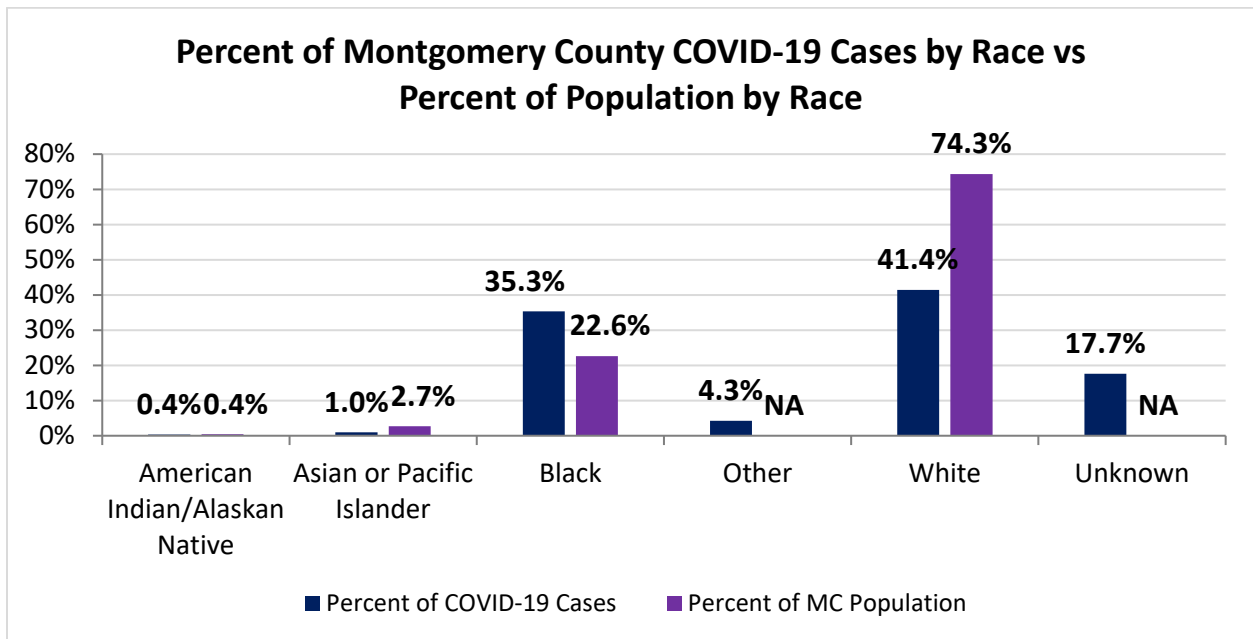
Note. All rates are per 100,000 population.

| Montgomery County COVID-19 Cases by Race As of 8/30/20 |              |             |                |                       |
|--|--------------|-------------|----------------|-----------------------|
| Race   | Count        | Percent     | Case Rate      | Rate Interpretation** |
| American Indian/Alaskan Native (AI/AN)*                | 20           | 0.4%        | 931.1          | 1 in 107              |
| Asian  | 57           | 1.0%        | 400.6          | 1 in 250              |
| Black  | 2,003        | 35.3%       | 1,664.2        | 1 in 60               |
| Other  | 242          | 4.3%        | NA             | NA                    |
| White  | 2,348        | 41.4%       | 593.5          | 1 in 169              |
| Unknown  | 1,001        | 17.7%       | NA             | NA                    |
| <b>Total</b>   | <b>5,671</b> | <b>100%</b> | <b>1,065.3</b> | <b>1 in 94</b>        |

\*Note. AI/ANs account for 0.4% of Montgomery County's population, and therefore, rates for this population will be large and may be misleading.

\*\*Rate interpretation represents the number of cases for the given population.

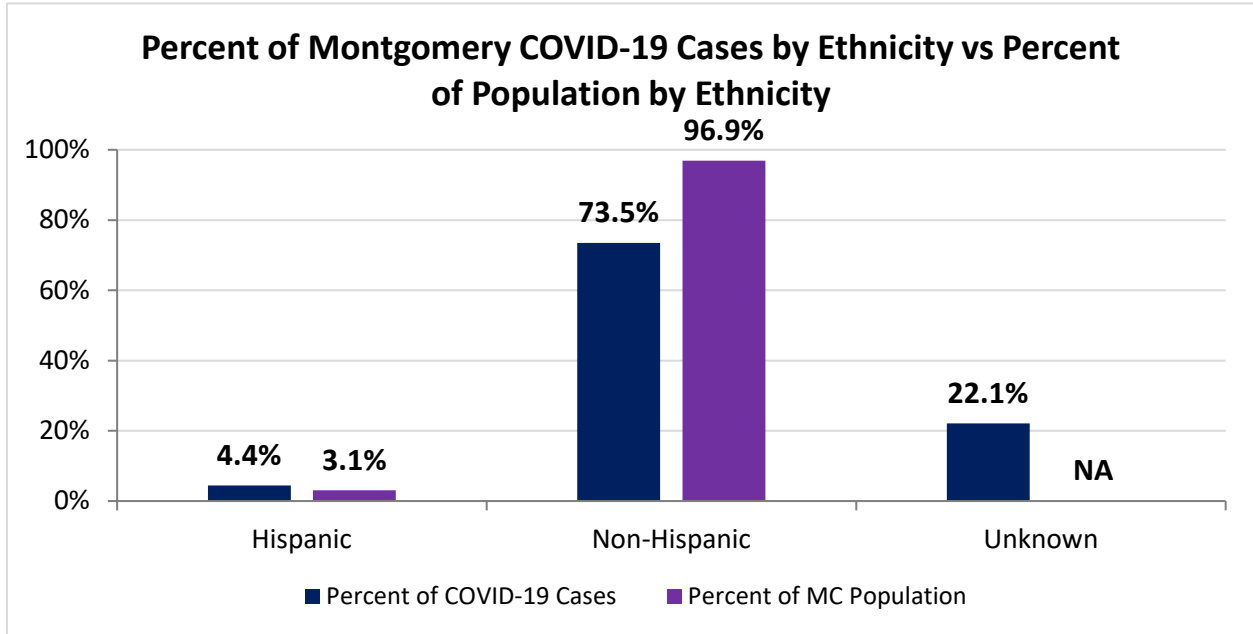
Example - there is a total of 1 case for every 94 Montgomery County residents.



| Montgomery County COVID-19 Deaths by Race as of 8/30/2020 |            |             |
|---|------------|-------------|
| Race  | Count      | Death Rate  |
| American Indian/Alaskan Native                            | 1          | 46.6        |
| Asian or Pacific Islander                                 | 2          | 14.1        |
| Black   | 50         | 41.5        |
| Other   | 1          | NA          |
| White   | 75         | 19.0        |
| Unknown   | 1          | NA          |
| <b>Total</b>  | <b>130</b> | <b>24.4</b> |

| <b>Montgomery County COVID-19 Cases by Ethnicity As of 8/30/20</b> |              |                |                  |                              |
|--|--------------|----------------|------------------|------------------------------|
| <b>Ethnicity</b>   | <b>Count</b> | <b>Percent</b> | <b>Case Rate</b> | <b>Rate Interpretation**</b> |
| Hispanic   | 249          | 4.4%           | 1,512.8          | 1 in 66                      |
| Non-Hispanic   | 4,170        | 73.5%          | 808.3            | 1 in 124                     |
| Unknown  | 1,252        | 22.1%          | NA               | NA                           |
| <b>Total</b>   | <b>5,671</b> | <b>100%</b>    | <b>1,065.3</b>   | <b>1 in 94</b>               |

\*\*Rate interpretation represents the number of cases for the given population.  
 Example - there is a total of 1 case for every 94 Montgomery County residents.



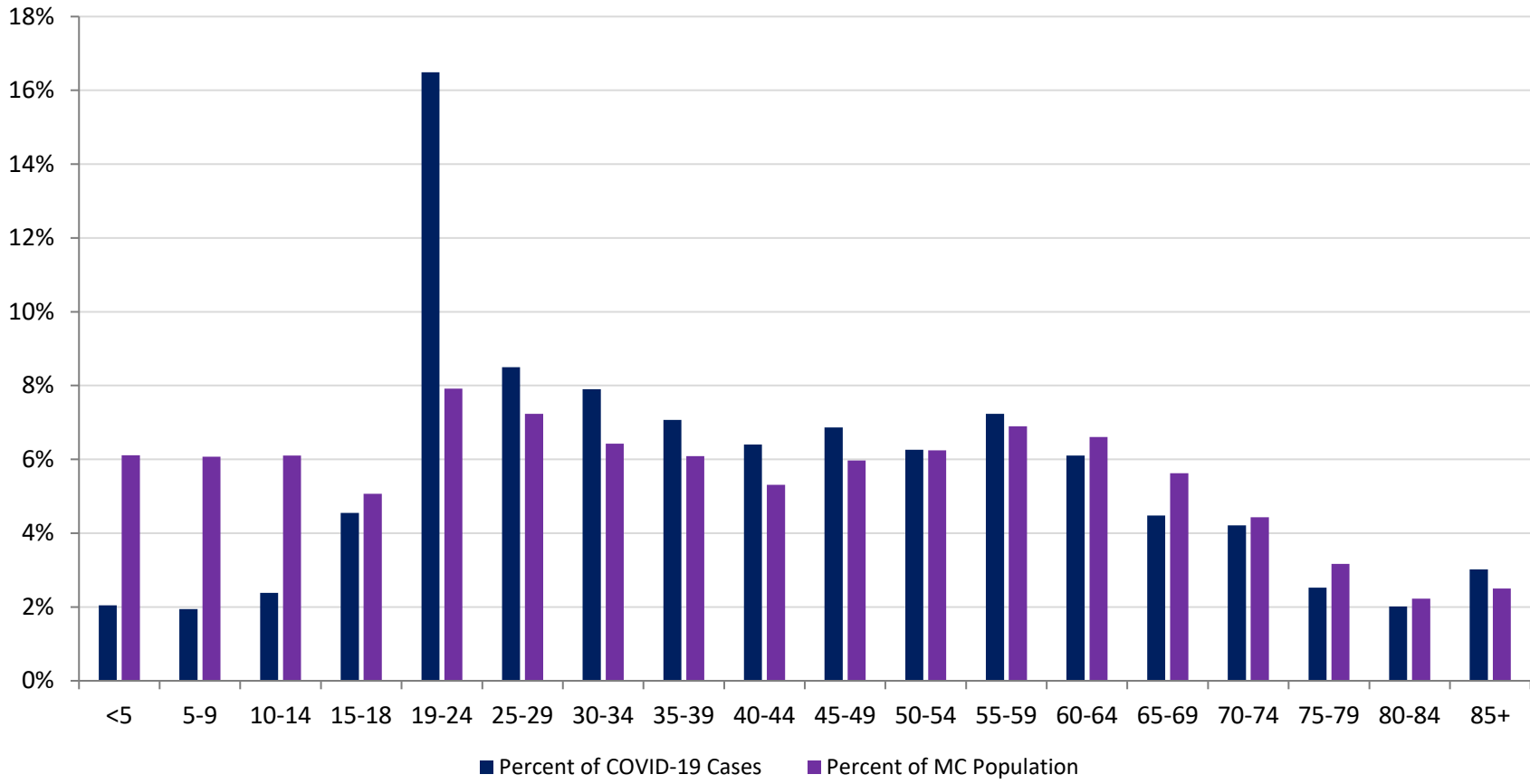
| <b>Montgomery County COVID-19 Cases by Health Care Worker Status As of 8/30/20</b> |              |             |
|--|--------------|-------------|
| <b>Status</b>  | <b>#</b>     | <b>%</b>    |
| Health Care Worker   | 564          | 9.9%        |
| Non-Health Care Worker   | 3,081        | 54.3%       |
| Unknown  | 2,026        | 35.7%       |
| <b>Total</b>   | <b>5,671</b> | <b>100%</b> |

| <b>Montgomery County COVID-19 Cases<br/>Age Range As of 8/30/20</b> |                     |
|---|---------------------|
| <b>Stat</b>   | <b>Age in Years</b> |
| Age Range   | <1 - 104            |
| Average Age   | 41.5                |
| Median Age  | 39.0                |

| <b>Montgomery County COVID-19 Cases by Age Group As of 8/30/20</b> |                |                  |                                      |                                     |
|--|----------------|------------------|--------------------------------------|-------------------------------------|
| <b>Age Group</b>   | <b># Cases</b> | <b>Case Rate</b> | <b>Percent of<br/>COVID-19 Cases</b> | <b>Percent of MC<br/>Population</b> |
| <5   | 116            | 356.7            | 2.0%                                 | 6.1%                                |
| 5-9  | 110            | 340.3            | 1.9%                                 | 6.1%                                |
| 10-14  | 135            | 415.3            | 2.4%                                 | 6.1%                                |
| 15-18  | 258            | 956.9            | 4.6%                                 | 5.1%                                |
| 19-24  | 935            | 2,219.5          | 16.5%                                | 7.9%                                |
| 25-29  | 482            | 1,252.1          | 8.5%                                 | 7.2%                                |
| 30-34  | 448            | 1,309.6          | 7.9%                                 | 6.4%                                |
| 35-39  | 401            | 1,237.3          | 7.1%                                 | 6.1%                                |
| 40-44  | 363            | 1,284.8          | 6.4%                                 | 5.3%                                |
| 45-49  | 389            | 1,223.3          | 6.9%                                 | 6.0%                                |
| 50-54  | 355            | 1,067.6          | 6.3%                                 | 6.2%                                |
| 55-59  | 410            | 1,116.3          | 7.2%                                 | 6.9%                                |
| 60-64  | 346            | 983.9            | 6.1%                                 | 6.6%                                |
| 65-69  | 254            | 848.8            | 4.5%                                 | 5.6%                                |
| 70-74  | 239            | 1,012.3          | 4.2%                                 | 4.4%                                |
| 75-79  | 143            | 847.4            | 2.5%                                 | 3.2%                                |
| 80-84  | 114            | 961.5            | 2.0%                                 | 2.2%                                |
| 85+  | 171            | 1,284.2          | 3.0%                                 | 2.5%                                |
| <b>Total</b>   | <b>5,669</b>   | <b>1,064.9</b>   | <b>100%</b>                          | <b>100%</b>                         |



Percent of Montgomery County COVID-19 Cases by Age Group vs Percent of Population by Age Group

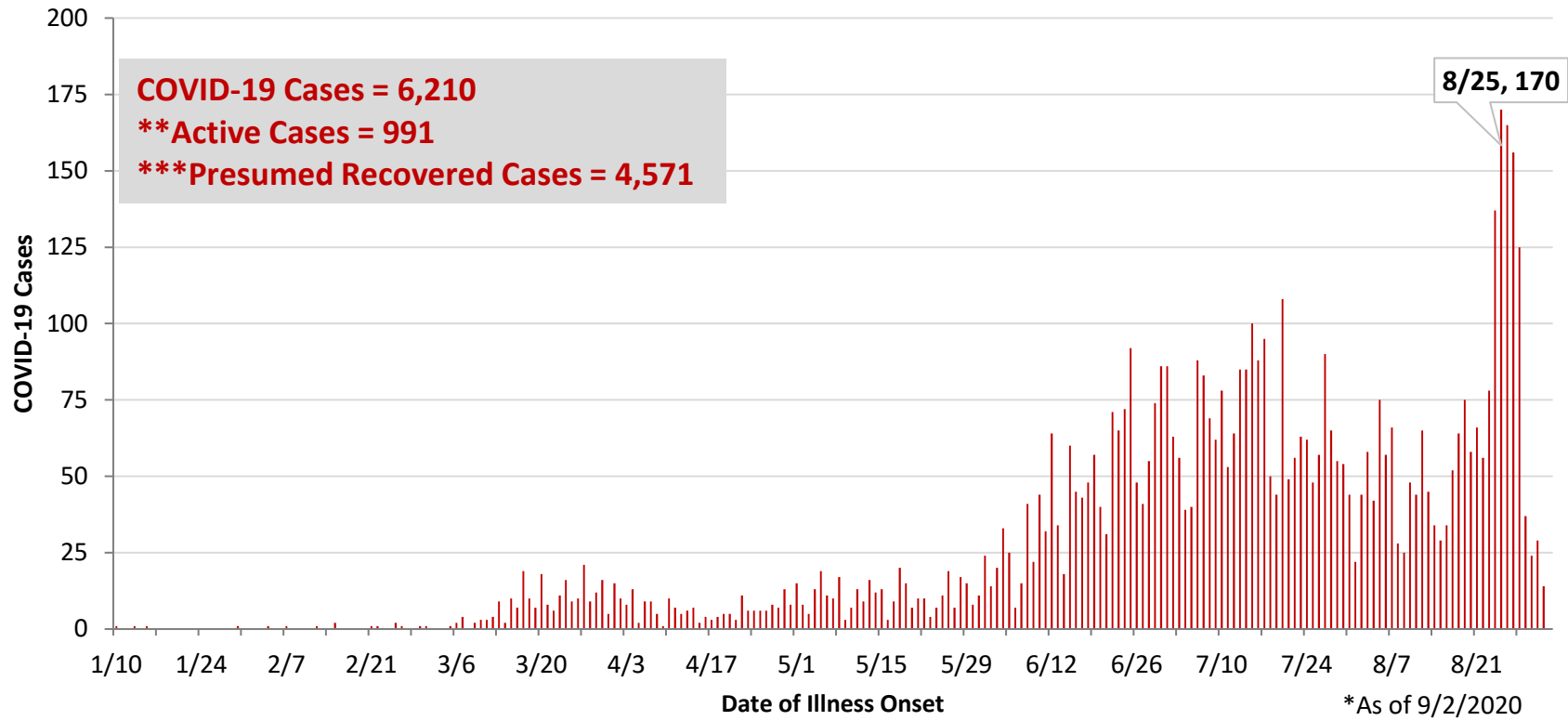


**PRELIMINARY Montgomery County COVID-19 Cases by Age Group – Cases before 6/1 and June Cases vs July Cases As of 8/30/2020 (% change from June to July)**

| <b>Age Group</b> | <b># Cases &lt;6/1</b> | <b>% of Cases &lt;6/1</b> | <b>Case Rate &lt;6/1</b> | <b># Cases June</b> | <b>% of Cases June</b> | <b>Case Rate June</b> | <b># Cases July</b> | <b>% of Cases July</b> | <b>Case Rate July</b> | <b>% Change # of Cases</b> |
|------------------|------------------------|---------------------------|--------------------------|---------------------|------------------------|-----------------------|---------------------|------------------------|-----------------------|----------------------------|
| <5               | 12                     | 1.5%                      | 36.9                     | 39                  | 3.0%                   | 119.9                 | 42                  | 2.0%                   | 129.2                 | 7.7%                       |
| 5-9              | 7                      | 0.9%                      | 21.7                     | 30                  | 2.3%                   | 92.8                  | 50                  | 2.4%                   | 154.7                 | 66.7%                      |
| 10-14            | 9                      | 1.1%                      | 27.7                     | 29                  | 2.2%                   | 89.2                  | 56                  | 2.7%                   | 172.3                 | 93.1%                      |
| 15-18            | 16                     | 2.0%                      | 59.3                     | 60                  | 4.6%                   | 222.5                 | 88                  | 4.2%                   | 326.4                 | 46.7%                      |
| 19-24            | 58                     | 7.4%                      | 137.7                    | 154                 | 11.7%                  | 365.6                 | 244                 | 11.8%                  | 579.2                 | 58.4%                      |
| 25-29            | 52                     | 6.6%                      | 135.1                    | 150                 | 11.4%                  | 389.7                 | 188                 | 9.1%                   | 488.4                 | 25.3%                      |
| 30-34            | 66                     | 8.4%                      | 192.9                    | 133                 | 10.1%                  | 388.8                 | 174                 | 8.4%                   | 508.6                 | 30.8%                      |
| 35-39            | 64                     | 8.1%                      | 197.5                    | 124                 | 9.4%                   | 382.6                 | 160                 | 7.7%                   | 493.7                 | 29.0%                      |
| 40-44            | 61                     | 7.8%                      | 215.9                    | 84                  | 6.4%                   | 297.3                 | 148                 | 7.1%                   | 523.8                 | 76.2%                      |
| 45-49            | 70                     | 8.9%                      | 220.1                    | 94                  | 7.1%                   | 295.6                 | 139                 | 6.7%                   | 437.1                 | 47.9%                      |
| 50-54            | 75                     | 9.5%                      | 225.5                    | 75                  | 5.7%                   | 225.5                 | 138                 | 6.6%                   | 415.0                 | 84.0%                      |
| 55-59            | 91                     | 11.6%                     | 247.8                    | 79                  | 6.0%                   | 215.1                 | 151                 | 7.3%                   | 411.1                 | 91.1%                      |
| 60-64            | 67                     | 8.5%                      | 190.5                    | 68                  | 5.2%                   | 193.4                 | 140                 | 6.7%                   | 398.1                 | 105.9%                     |
| 65-69            | 54                     | 6.9%                      | 180.5                    | 47                  | 3.6%                   | 157.1                 | 98                  | 4.7%                   | 327.5                 | 108.5%                     |
| 70-74            | 43                     | 5.5%                      | 182.1                    | 45                  | 3.4%                   | 190.6                 | 95                  | 4.6%                   | 402.4                 | 111.1%                     |
| 75-79            | 16                     | 2.0%                      | 94.8                     | 34                  | 2.6%                   | 201.5                 | 53                  | 2.6%                   | 314.1                 | 55.9%                      |
| 80-84            | 14                     | 1.8%                      | 118.1                    | 29                  | 2.2%                   | 244.6                 | 47                  | 2.3%                   | 396.4                 | 62.1%                      |
| 85+              | 12                     | 1.5%                      | 90.1                     | 43                  | 3.3%                   | 322.9                 | 65                  | 3.1%                   | 488.1                 | 51.2%                      |
| <b>Total</b>     | <b>787</b>             | <b>100%</b>               | <b>147.8</b>             | <b>1,317</b>        | <b>100%</b>            | <b>247.4</b>          | <b>2,076</b>        | <b>100%</b>            | <b>390.0</b>          | <b>57.6%</b>               |

| PRELIMINARY Montgomery County COVID-19 Cases by Age Group –July Cases vs August Cases As of 8/30/2020<br>(% change from July to August) |              |                 |                |                |                   |                  |                     |
|---|--------------|-----------------|----------------|----------------|-------------------|------------------|---------------------|
| Age Group   | # Cases July | % of Cases July | Case Rate July | # Cases August | % of Cases August | Case Rate August | % Change # of Cases |
| <5  | 42           | 2.0%            | 129.2          | 23             | 1.5%              | 70.7             | -45.2%              |
| 5-9   | 50           | 2.4%            | 154.7          | 23             | 1.5%              | 71.2             | -54.0%              |
| 10-14   | 56           | 2.7%            | 172.3          | 41             | 2.8%              | 126.1            | -26.8%              |
| 15-18   | 88           | 4.2%            | 326.4          | 94             | 6.3%              | 348.7            | 6.8%                |
| 19-24   | 244          | 11.8%           | 579.2          | 479            | 32.2%             | 1137.0           | 96.3%               |
| 25-29   | 188          | 9.1%            | 488.4          | 92             | 6.2%              | 239.0            | -51.1%              |
| 30-34   | 174          | 8.4%            | 508.6          | 75             | 5.0%              | 219.2            | -56.9%              |
| 35-39   | 160          | 7.7%            | 493.7          | 53             | 3.6%              | 163.5            | -66.9%              |
| 40-44   | 148          | 7.1%            | 523.8          | 70             | 4.7%              | 247.8            | -52.7%              |
| 45-49   | 139          | 6.7%            | 437.1          | 86             | 5.8%              | 270.4            | -38.1%              |
| 50-54   | 138          | 6.6%            | 415.0          | 67             | 4.5%              | 201.5            | -51.4%              |
| 55-59   | 151          | 7.3%            | 411.1          | 89             | 6.0%              | 242.3            | -41.1%              |
| 60-64   | 140          | 6.7%            | 398.1          | 71             | 4.8%              | 201.9            | -49.3%              |
| 65-69   | 98           | 4.7%            | 327.5          | 55             | 3.7%              | 183.8            | -43.9%              |
| 70-74   | 95           | 4.6%            | 402.4          | 56             | 3.8%              | 237.2            | -41.1%              |
| 75-79   | 53           | 2.6%            | 314.1          | 40             | 2.7%              | 237.0            | -24.5%              |
| 80-84   | 47           | 2.3%            | 396.4          | 24             | 1.6%              | 202.4            | -48.9%              |
| 85+   | 65           | 3.1%            | 488.1          | 51             | 3.4%              | 383.0            | -21.5%              |
| <b>Total</b>  | <b>2,076</b> | <b>100%</b>     | <b>390.0</b>   | <b>1,489</b>   | <b>100%</b>       | <b>279.7</b>     | <b>-28.3%</b>       |

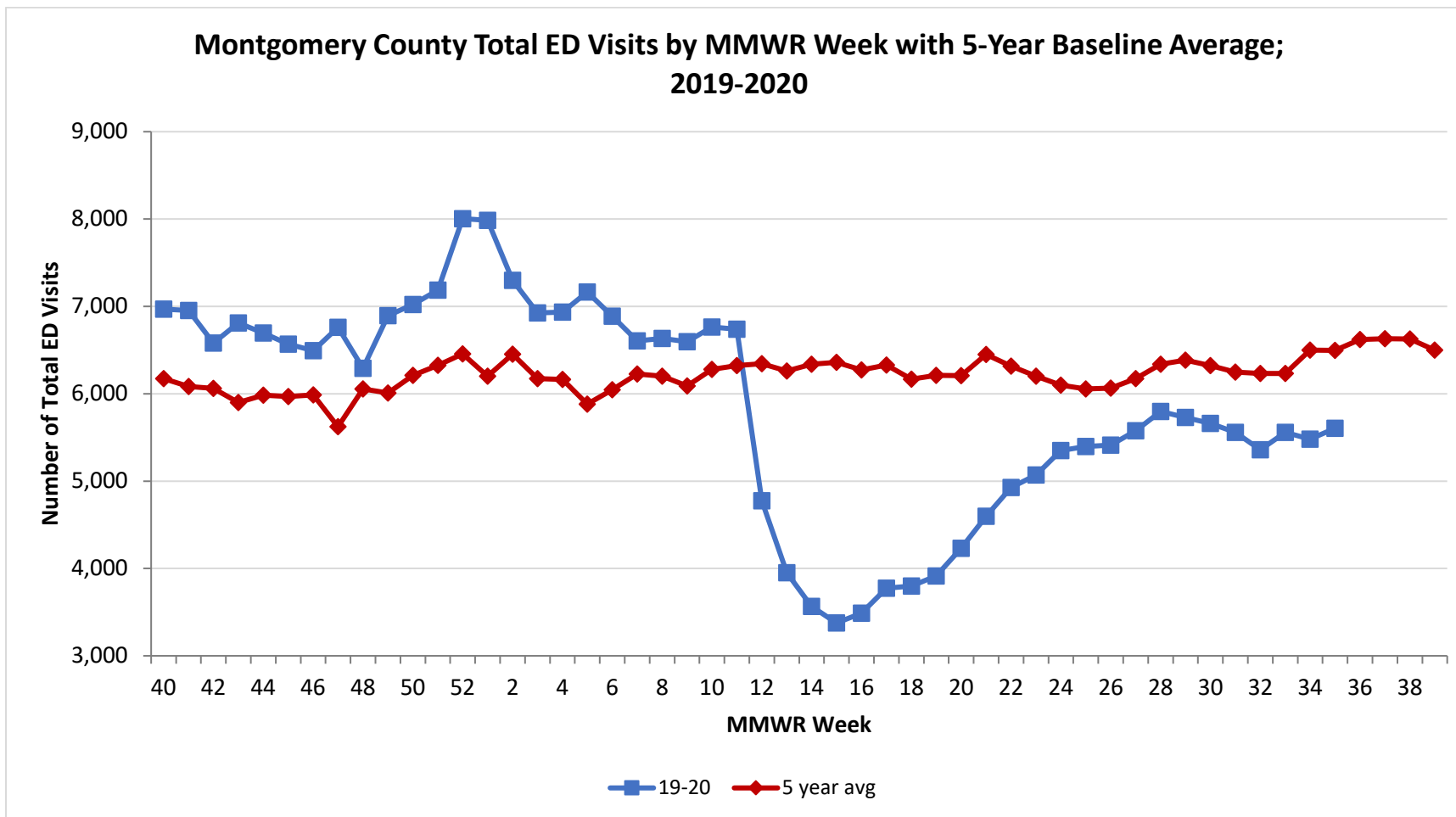
**PRELIMINARY COVID-19 Cases by Date of Illness Onset  
Montgomery County, 1/10/20 - 9/2/20\***



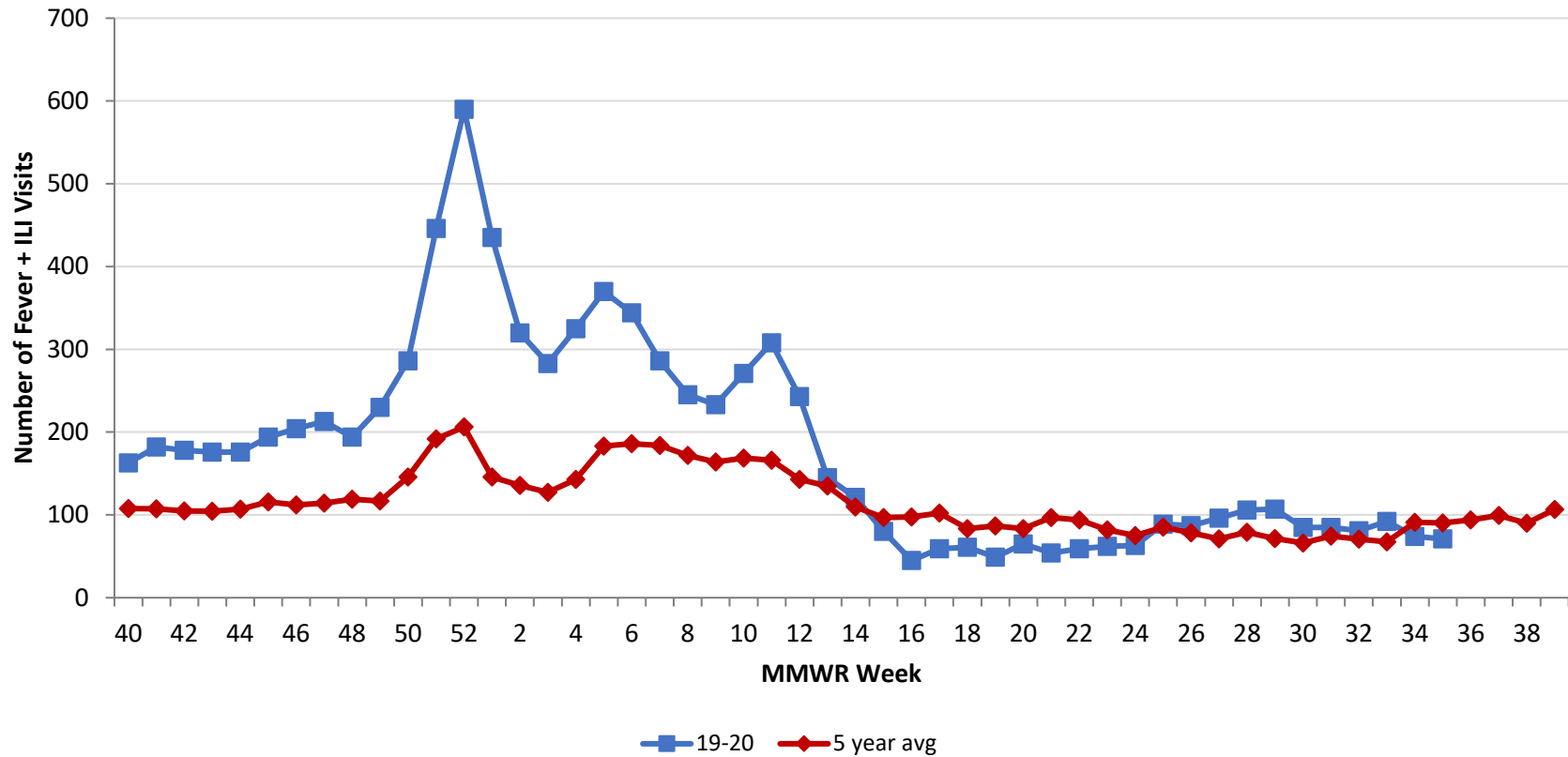
\*\*Active cases are based on the reported illness onset date (using a 10-day window) of reported cases.

\*\*\*Presumed recovered is defined as cases with a symptom onset date >21 days prior who are not deceased.

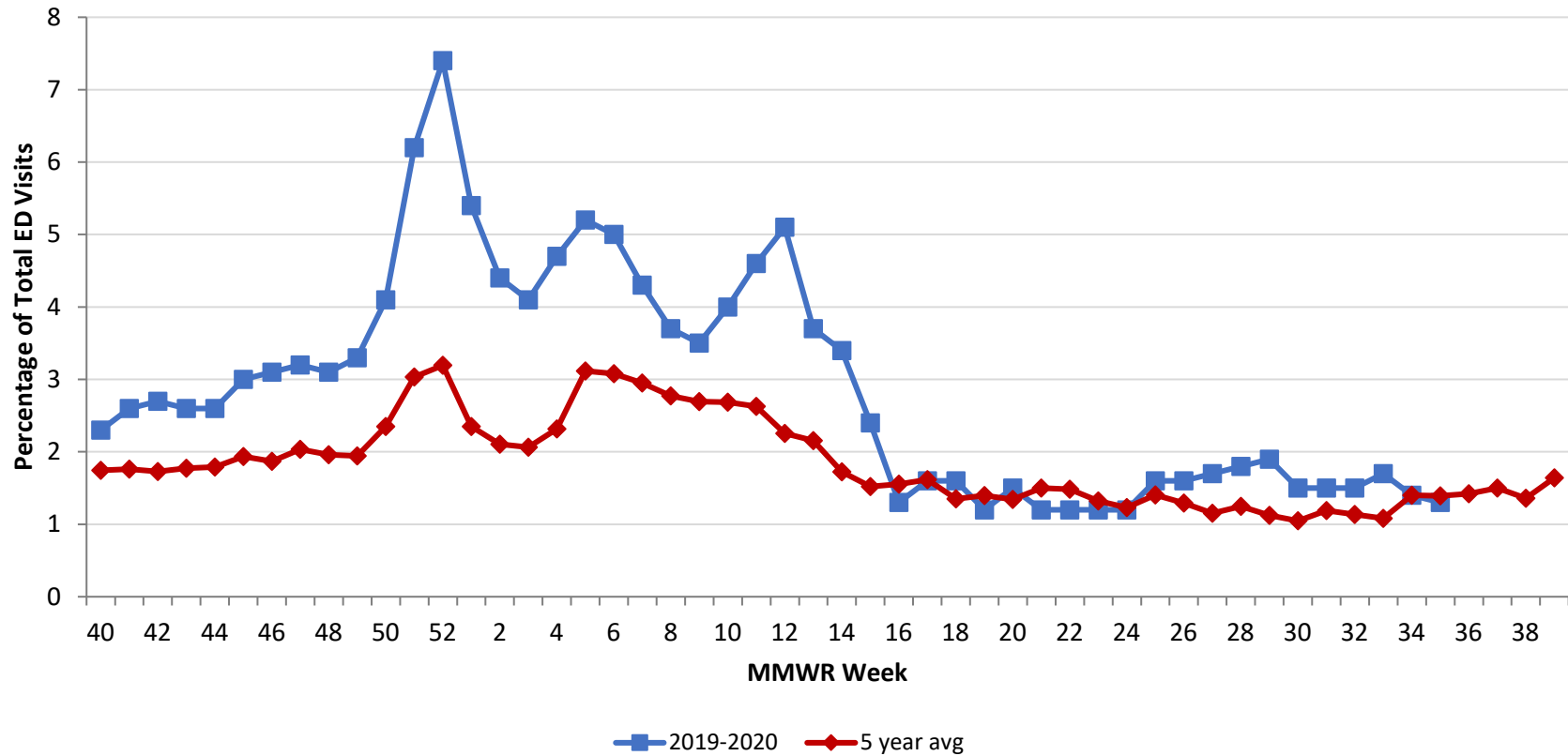
Source: EpiCenter Syndromic Surveillance, Health Monitoring Systems



Montgomery County Fever + ILI Specified ED Visits by MMWR Week with 5-Year Baseline Average; 2019-2020



**Montgomery County Fever + ILI Specified ED Visits (% of Total Visits) by MMWR Week  
with 5-Year Baseline Average; 2019-2020**



| # Total Visits |       |                |
|----------------|-------|----------------|
| MMWR Week      | 19-20 | 5-Year Average |
| 52             | 8,005 | 6456.0         |
| 1              | 7,986 | 6200.8         |
| 2              | 7,297 | 6452.4         |
| 3              | 6,924 | 6172.9         |
| 4              | 6,935 | 6164.0         |
| 5              | 7,164 | 5881.8         |
| 6              | 6,888 | 6045.0         |
| 7              | 6,605 | 6226.8         |
| 8              | 6,633 | 6200.6         |
| 9              | 6,597 | 6088.2         |
| 10             | 6,763 | 6279.6         |
| 11             | 6,738 | 6321.6         |
| 12             | 4,775 | 6345.0         |
| 13             | 3,952 | 6259.8         |
| 14             | 3,565 | 6337.4         |
| 15             | 3,376 | 6360.6         |
| 16             | 3,489 | 6273.4         |
| 17             | 3,774 | 6327.8         |
| 18             | 3,798 | 6165.8         |
| 19             | 3,915 | 6209.8         |
| 20             | 4,231 | 6208.4         |
| 21             | 4,598 | 6,449.6        |
| 22             | 4,928 | 6,315.4        |
| 23             | 5,070 | 6,201.0        |
| 24             | 5,350 | 6,098.4        |
| 25             | 5,398 | 6,055.8        |
| 26             | 5,412 | 6,063.2        |
| 27             | 5,577 | 6,173.0        |
| 28             | 5,797 | 6,339.0        |
| 29             | 5,728 | 6384.6         |
| 30             | 5,661 | 6,322.0        |
| 31             | 5,557 | 6,247.2        |
| 32             | 5,359 | 6232.8         |
| 33             | 5,558 | 6,233.8        |
| 34             | 5,481 | 6,501.0        |
| 35             | 5,606 | 6,496.2        |

| # Fever + ILI Visits |       |                |
|----------------------|-------|----------------|
| MMWR Week            | 19-20 | 5-Year Average |
| 52                   | 590   | 206.2          |
| 1                    | 435   | 145.8          |
| 2                    | 320   | 135.8          |
| 3                    | 283   | 127.4          |
| 4                    | 325   | 142.8          |
| 5                    | 370   | 183.2          |
| 6                    | 344   | 186.2          |
| 7                    | 286   | 183.8          |
| 8                    | 245   | 171.8          |
| 9                    | 233   | 164.0          |
| 10                   | 271   | 168.6          |
| 11                   | 308   | 166.2          |
| 12                   | 243   | 143.0          |
| 13                   | 145   | 134.8          |
| 14                   | 121   | 109.4          |
| 15                   | 80    | 96.8           |
| 16                   | 45    | 97.6           |
| 17                   | 59    | 102.4          |
| 18                   | 61    | 83.4           |
| 19                   | 49    | 86.8           |
| 20                   | 65    | 83.4           |
| 21                   | 54    | 96.8           |
| 22                   | 59    | 93.8           |
| 23                   | 62    | 82.0           |
| 24                   | 63    | 75.0           |
| 25                   | 89    | 85.2           |
| 26                   | 87    | 78.4           |
| 27                   | 96    | 71.2           |
| 28                   | 106   | 79.2           |
| 29                   | 107   | 71.6           |
| 30                   | 85    | 66.2           |
| 31                   | 85    | 74.2           |
| 32                   | 81    | 70.8           |
| 33                   | 92    | 67.4           |
| 34                   | 74    | 91.0           |
| 35                   | 71    | 90.4           |

| % Fever + ILI Visits |       |                |
|----------------------|-------|----------------|
| MMWR Week            | 19-20 | 5-Year Average |
| 52                   | 7.4   | 3.2            |
| 1                    | 5.4   | 2.4            |
| 2                    | 4.4   | 2.1            |
| 3                    | 4.1   | 2.1            |
| 4                    | 4.7   | 2.3            |
| 5                    | 5.2   | 3.1            |
| 6                    | 5     | 3.1            |
| 7                    | 4.3   | 3.0            |
| 8                    | 3.7   | 2.8            |
| 9                    | 3.5   | 2.7            |
| 10                   | 4     | 2.7            |
| 11                   | 4.6   | 2.6            |
| 12                   | 5.1   | 2.3            |
| 13                   | 3.7   | 2.2            |
| 14                   | 3.4   | 1.7            |
| 15                   | 2.4   | 1.5            |
| 16                   | 1.3   | 1.6            |
| 17                   | 1.6   | 1.6            |
| 18                   | 1.6   | 1.4            |
| 19                   | 1.2   | 1.4            |
| 20                   | 1.5   | 1.3            |
| 21                   | 1.2   | 1.5            |
| 22                   | 1.2   | 1.5            |
| 23                   | 1.2   | 1.3            |
| 24                   | 1.2   | 1.2            |
| 25                   | 1.6   | 1.4            |
| 26                   | 1.6   | 1.3            |
| 27                   | 1.7   | 1.2            |
| 28                   | 1.8   | 1.2            |
| 29                   | 1.9   | 1.1            |
| 30                   | 1.5   | 1.0            |
| 31                   | 1.5   | 1.2            |
| 32                   | 1.5   | 1.1            |
| 33                   | 1.7   | 1.1            |
| 34                   | 1.4   | 1.4            |
| 35                   | 1.3   | 1.4            |