


## Guidance for Use of Dayton MMRS SALT Triage Materials

David N. Gerstner  
MMRS Program Manager  
Dayton Fire Department  
[www.DaytonMMRS.org](http://www.DaytonMMRS.org)  
937-333-4554  
david.gerstner@daytonohio.gov



## Objective

- Be able to quickly and effectively use Dayton MMRS SALT Triage Materials, including:
  - “Live” Triage Tags
  - Training Triage Tags
  - Exercise Triage Tags
  - Triage Ribbon Kits
  - Transport Log
  - Transport Worksheet



## DAYTON MMRS TRIAGE MATERIALS

- Presentation covers MATERIALS
- For instructions on use of SALT, see GMVEMSC Standing Orders and separate video/PowerPoint at:
  - [www.gmvemsc.org](http://www.gmvemsc.org)
  - [www.DaytonMMRS.org](http://www.DaytonMMRS.org)




## Inventory




## DAYTON MMRS TRIAGE MATERIALS

- GMVEMS Council adopted SALT Triage on recommendation of Dayton MMRS Triage Committee after approval by EMS Region 2 RPAB
- Dayton MMRS agreed to provide Triage Materials
  - Materials have been distributed to County EMAs for further distribution to EMS agencies



## DAYTON MMRS TRIAGE MATERIALS

- Two types of triage material sets:
  - Triage Ribbon Kits
  - Transport Group Materials
    - Triage Tags (“Live”) included in clipboard





### DAYTON MMRS TRIAGE MATERIALS

- **Triage Ribbon Kit:**
  - Triage Ribbon Case (pre-assembled with six rolls of colored ribbons)
  - Scissors
  - Flashlight
  - Grease pencil
  - SALT Triage flowchart
  - Place where each agency can mark the agency and apparatus nomenclature



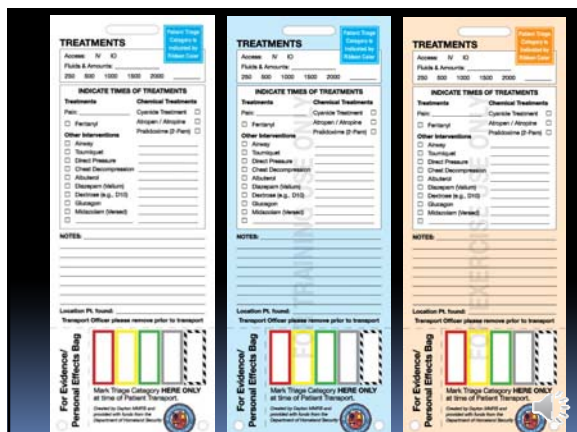
### DAYTON MMRS TRIAGE MATERIALS

- **Triage/Transport Tags and Materials:**
  - Storing clipboard (with MMRS logo) pre-assembled with:
    - Shrink-wrapped pack of 25 Triage Tags
    - Shrink-wrapped pack of 10 Transport Officer WorkSheets
    - Shrink-wrapped pack of 10 Transport Officer Logs
  - Grease pencil, pen, and a carabiner for the Transport Officer to use to hold bottom section of Triage Tags
  - Instruction Sheet explaining Tags, Ribbons, and Transport Sheet and Log

### DAYTON MMRS TRIAGE MATERIALS

- **Materials available electronically at [DaytonMMRS.org](http://DaytonMMRS.org)**
  - Transportation Officer WorkSheets
  - Transport Officer Logs
  - Instruction Sheet
  - Videos and Powerpoints
  - Images of Triage Tags (three types)





### DAYTON MMRS TRIAGE MATERIALS

- Three versions of Triage Tags:
  - “Live” tags:
    - Expensive
    - White
    - Synthetic paper
    - Bar codes, numbers, & RFID tags
    - Hospitals can use the bar code or the RFID tags but the viewable tag number matches the bar code, not the RFID

### DAYTON MMRS TRIAGE MATERIALS

- White Triage Tags:
  - Only for “real world” use:
    - Actual MCIs

### DAYTON MMRS TRIAGE MATERIALS

- Three versions of Triage Tags:
  - Training tags:
    - Printed on blue background on cardstock
    - “For Training Use Only” watermark
    - No bar codes, numbers, or RFID tags.
    - Intended to be used for “Triage Tuesdays” and other drills
    - Inexpensive
    - Available in quantities from Dayton MMRS and county EMAs

### DAYTON MMRS TRIAGE MATERIALS

- Three versions of Triage Tags:
  - Exercise tags:
    - Printed on orange background on cardstock
    - “For Exercise Use Only” watermark
    - Exercise tags have bar codes, numbers, and RFID tags
    - Intended to be used for significant exercises where simulated patients will actually be transported to hospitals
    - Available from Dayton MMRS

### DAYTON MMRS TRIAGE MATERIALS

- Three versions of Triage Tags:
  - Each EMA will have a supply of Training Triage tags and extra ribbon rolls
  - Do not use “Live” Triage Tags for training or exercises
  - Training Tags for training!

## Using Dayton MMRS Triage Materials:

# Triage Ribbon Kits



## DAYTON MMRS TRIAGE RIBBON KIT



## Triage Ribbons

- Triage Ribbon is principal indication of the patient's category
  - Triage Ribbon used later to attach the Triage Tag
  - Leave fairly long tails on each patient's ribbon
  - Attach ribbons on right wrist, if possible



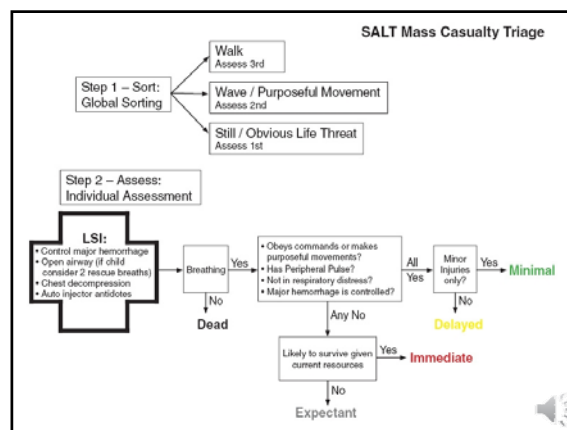
## Ribbons & tags

- Use Ribbons to attach the Tags
- If Triage Category changes:
  - change the ribbon!
- But keep the same Tag



## DAYTON MMRS TRIAGE RIBBON KIT

- Two storage compartments plus a glove pocket
- Materials not supplied by MMRS, but pockets can hold LSIs up to:
  - Four CAT tourniquets
  - Four chest decompression needles
  - Four Combat Dressings
  - Four NPA
  - Gloves




### DAYTON MMRS TRIAGE RIBBON KIT

- Initial triage is indicated by the color-coded triage ribbons. Use the same ribbons to tie the Triage Tag to the patient.



### Ribbon Colors Match ID-MED Triage Categories

- Immediate
- Delayed
- Minimal
- Expectant
- Dead
- (Ribbon/Tag zebra-striped)



### DAYTON MMRS TRIAGE RIBBON KIT

- Sixth color ribbon is Orange for contaminated patients
- Has dots to distinguish from red ribbons
- Contaminated patients initially get two ribbons (orange plus category color)
- Remove orange ribbon once patient decon'ed, but mark on Triage Tag



### Using Dayton MMRS Triage Materials:

## Triage Tags



**TREATMENTS**

Indicate Times of Treatments

For Evidence/Personal Effects Bag

Mark Triage Category HERE ONLY at Site of Patient Transport



**TREATMENTS**

Indicate Times of Treatments

For Evidence/Personal Effects Bag

Mark Triage Category HERE ONLY at Site of Patient Transport

Name: \_\_\_\_\_ M / F  
Allergies: \_\_\_\_\_ Age \_\_\_\_\_  
Injury Key:  
1. \_\_\_\_\_  
2. \_\_\_\_\_  
3. \_\_\_\_\_  
4. \_\_\_\_\_  
5. \_\_\_\_\_  
DIRTY DECONTAMINATED  
Time \_\_\_\_\_  
Pulse / BP \_\_\_\_\_  
Respirations \_\_\_\_\_  
AVPU \_\_\_\_\_  
Category \_\_\_\_\_  
Triage Category Indicated by Ribbon Color

Name: \_\_\_\_\_ M / F  
Allergies: \_\_\_\_\_ Age \_\_\_\_\_  
Injury Key:  
1. \_\_\_\_\_  
2. \_\_\_\_\_  
3. \_\_\_\_\_  
4. \_\_\_\_\_  
5. \_\_\_\_\_  
DIRTY DECONTAMINATED  
Time \_\_\_\_\_  
Pulse / BP \_\_\_\_\_  
Respirations \_\_\_\_\_  
AVPU \_\_\_\_\_  
Category \_\_\_\_\_  
Triage Category Indicated by Ribbon Color

Name: \_\_\_\_\_ M / F  
Allergies: \_\_\_\_\_ Age \_\_\_\_\_  
Injury Key:  
1. \_\_\_\_\_  
2. \_\_\_\_\_  
3. \_\_\_\_\_  
4. \_\_\_\_\_  
5. \_\_\_\_\_  
DIRTY DECONTAMINATED  
Time \_\_\_\_\_  
Pulse / BP \_\_\_\_\_  
Respirations \_\_\_\_\_  
AVPU \_\_\_\_\_  
Category \_\_\_\_\_  
Triage Category Indicated by Ribbon Color

Name: \_\_\_\_\_ M / F  
Allergies: \_\_\_\_\_ Age \_\_\_\_\_  
Injury Key:  
1. Burns  
2. \_\_\_\_\_  
3. \_\_\_\_\_  
4. \_\_\_\_\_  
5. \_\_\_\_\_  
DIRTY DECONTAMINATED  
Time \_\_\_\_\_  
Pulse / BP \_\_\_\_\_  
Respirations \_\_\_\_\_  
AVPU \_\_\_\_\_  
Category \_\_\_\_\_  
Triage Category Indicated by Ribbon Color

Name: \_\_\_\_\_ M / F  
Allergies: \_\_\_\_\_ Age \_\_\_\_\_  
Injury Key:  
1. \_\_\_\_\_  
2. \_\_\_\_\_  
3. \_\_\_\_\_  
4. \_\_\_\_\_  
5. \_\_\_\_\_  
DIRTY DECONTAMINATED  
Time \_\_\_\_\_  
Pulse / BP \_\_\_\_\_  
Respirations \_\_\_\_\_  
AVPU \_\_\_\_\_  
Category \_\_\_\_\_  
Triage Category Indicated by Ribbon Color

Name: \_\_\_\_\_ M / F  
Allergies: \_\_\_\_\_ Age \_\_\_\_\_  
Injury Key:  
1. \_\_\_\_\_  
2. \_\_\_\_\_  
3. \_\_\_\_\_  
4. \_\_\_\_\_  
5. \_\_\_\_\_  
DIRTY DECONTAMINATED  
Time \_\_\_\_\_  
Pulse / BP \_\_\_\_\_  
Respirations \_\_\_\_\_  
AVPU \_\_\_\_\_  
Category \_\_\_\_\_  
Triage Category Indicated by Ribbon Color

Name: \_\_\_\_\_ M / F  
Age: \_\_\_\_\_  
Injury Key:  
1. \_\_\_\_\_  
2. \_\_\_\_\_  
3. \_\_\_\_\_  
4. \_\_\_\_\_  
5. \_\_\_\_\_  
**DIRTY** **DECONTAMINATED**  
Time: \_\_\_\_\_  
Pulse / BP: \_\_\_\_\_  
Respirations: \_\_\_\_\_  
AP/PU: \_\_\_\_\_  
Category: \_\_\_\_\_  
Place Category Indicated by Ribbon Color

**TREATMENTS**  
Access: IV IO  
Fluids & Amounts:  
250 500 1000 1500 2000  
INDICATE TIMES OF TREATMENTS  
Treatments: \_\_\_\_\_  
Chemical Treatments:  
Pain: \_\_\_\_\_  
Cyanide Treatment   
 Fentanyl Atropen / Atropine   
Other Interventions: \_\_\_\_\_  
Pralidoxime (2-Pam)   
 Airway  
 Tourniquet  
 Direct Pressure  
 Chest Decompression  
 Albuterol  
 Diazepam (Valium)  
 Dextrose (e.g., D10)  
 Glucagon  
 Midazolam (Versed)  
NOTES:  
\_\_\_\_\_  
\_\_\_\_\_  
\_\_\_\_\_  
Location PL found:  
Transport Officer please remove prior to transport

**TREATMENTS**  
Access: IV IO  
Fluids & Amounts:  
250 500 1000 1500 2000  
INDICATE TIMES OF TREATMENTS  
Treatments: \_\_\_\_\_  
Chemical Treatments:  
Pain: \_\_\_\_\_  
Cyanide Treatment   
 Fentanyl Atropen / Atropine   
Other Interventions: \_\_\_\_\_  
Pralidoxime (2-Pam)   
 Airway  
 Tourniquet  
 Direct Pressure  
 Chest Decompression  
 Albuterol  
 Diazepam (Valium)  
 Dextrose (e.g., D10)  
 Glucagon  
 Midazolam (Versed)  
NOTES:  
\_\_\_\_\_  
\_\_\_\_\_  
\_\_\_\_\_  
Location PL found:  
Transport Officer please remove prior to transport

**TREATMENTS**  
Access: IV IO  
Fluids & Amounts:  
250 500 1000 1500 2000  
INDICATE TIMES OF TREATMENTS  
Treatments: \_\_\_\_\_  
Chemical Treatments:  
Pain: \_\_\_\_\_  
Cyanide Treatment   
 Fentanyl Atropen / Atropine   
Other Interventions: \_\_\_\_\_  
Pralidoxime (2-Pam)   
 Airway  
 Tourniquet  
 Direct Pressure  
 Chest Decompression  
 Albuterol  
 Diazepam (Valium)  
 Dextrose (e.g., D10)  
 Glucagon  
 Midazolam (Versed)  
NOTES:  
\_\_\_\_\_  
\_\_\_\_\_  
\_\_\_\_\_  
Location PL found:  
Transport Officer please remove prior to transport

**TREATMENTS**  
Access: IV IO  
Fluids & Amounts:  
250 500 1000 1500 2000  
INDICATE TIMES OF TREATMENTS  
Treatments: \_\_\_\_\_  
Chemical Treatments:  
Pain: \_\_\_\_\_  
Cyanide Treatment   
 Fentanyl Atropen / Atropine   
Other Interventions: \_\_\_\_\_  
Pralidoxime (2-Pam)   
 Airway  
 Tourniquet  
 Direct Pressure  
 Chest Decompression  
 Albuterol  
 Diazepam (Valium)  
 Dextrose (e.g., D10)  
 Glucagon  
 Midazolam (Versed)  
NOTES:  
\_\_\_\_\_  
\_\_\_\_\_  
\_\_\_\_\_  
Location PL found:  
Transport Officer please remove prior to transport

For Evidence/  
Personal Effects Bag

For Evidence/  
Personal Effects Bag









### Transportation Officer's Destination Worksheet

**ABLE TO RECEIVE** **SENT**

HOSPITAL	CITY	Green	Yellow	Red	Gray	Green	Yellow	Red	Gray
Adams Medical	Middletown								
Dayton Children's	Dayton								
Good Samaritan Hospital	Dayton								
Grady Memorial Hospital	Dayton								
Greene Memorial Hospital	Warren								

### Transportation Officer's Destination Worksheet

**ABLE TO RECEIVE** **SENT**

HOSPITAL	CITY	Green	Yellow	Red	Gray	Green	Yellow	Red	Gray
Adams Medical	Middletown								
Dayton Children's	Dayton								
Good Samaritan Hospital	Dayton								
Grady Memorial Hospital	Dayton								
Greene Memorial Hospital	Warren								

### Transportation Officer's Destination Worksheet

**ABLE TO RECEIVE** **SENT**

HOSPITAL	CITY	Green	Yellow	Red	Gray	Green	Yellow	Red	Gray
Adams Medical	Middletown								
Dayton Children's	Dayton								
Good Samaritan Hospital	Dayton								
Grady Memorial Hospital	Dayton								
Greene Memorial Hospital	Warren								

### Out of Region Adult and Pedi: Level 1 - 2 Trauma Centers

**ABLE TO RECEIVE** **SENT**

HOSPITAL	CITY	Green	Yellow	Red	Gray	Green	Yellow	Red	Gray
Adams Medical	Middletown								
Dayton Children's	Dayton								
Good Samaritan Hospital	Dayton								
Grady Memorial Hospital	Dayton								
Greene Memorial Hospital	Warren								

### Other Out of Region Hospitals

Hospital Identifier	Hospital	City
<b>Butler County</b>		
FMH	Fort Hamilton	Hamilton
MHMH	McCullough-Hyde	Oxford
MHF	Mercy Fairfield	Fairfield
WCMC	West Chester Med	West Chester
BBCB	Bethesda Butler	Hamilton
CCLC	Children's Liberty	Liberty
<b>Clinton County</b>		
CMH	Clinton Memorial	Wilmington
<b>Fayette County</b>		
FCMH	Fayette County	Washington CH
<b>Indiana, Randolph County</b>		
SVRH	St. Vincent Randolph	Winchester
<b>Warren County</b>		
BASH	Bethesda-Arrow	Lebanon

### Transportation Officer's Destination Worksheet

**ABLE TO RECEIVE** **SENT**

HOSPITAL	CITY	Green	Yellow	Red	Gray	Green	Yellow	Red	Gray
Adams Medical	Middletown								
Dayton Children's	Dayton								
Good Samaritan Hospital	Dayton								
Grady Memorial Hospital	Dayton								
Greene Memorial Hospital	Warren								

